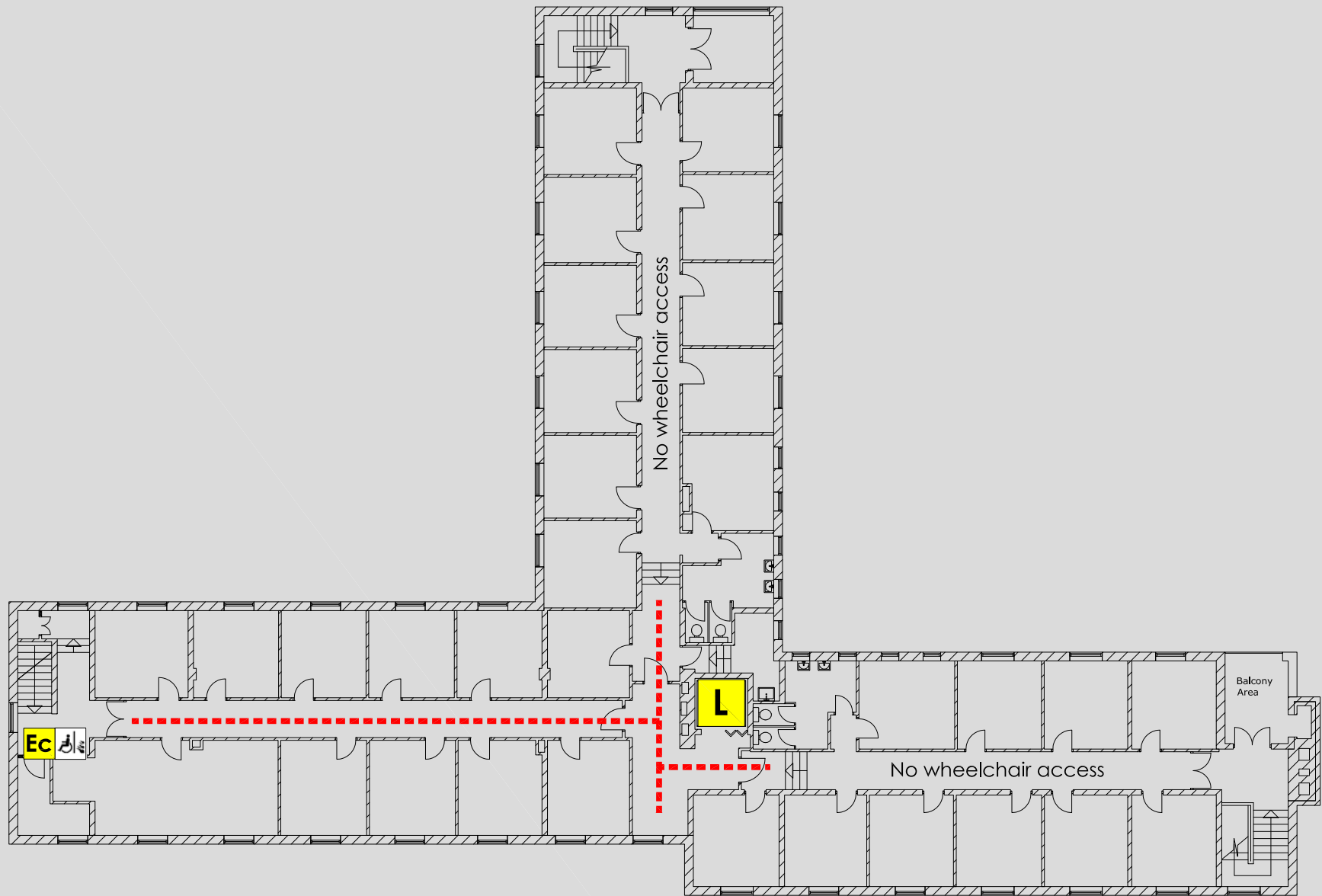


ACCESS @ MMU

LAURENCE BUILDING, CREWE CAMPUS : SECOND FLOOR PLAN



Manchester Metropolitan University
 Cheshire Campus
 Crewe Green Road
 Crewe, Cheshire, CW1 5DU

Reception 0161 247 5003
 Security 0161 247 1334

| KEY | |
|-----|---------------------------------|
| | Accessible route |
| - | - |
| | Automatic door |
| | Door on hold open devices |
| | Push button power assisted door |
| | Controlled access door |
| | Accessible lift |
| | Accessible reception counter |
| | Hearing loop available |
| | Fully Accessible toilet |
| | Accessible toilet |
| | Accessible ramp |
| | Fire refuge space |
| | Emergency exit only |
| | Evacuation chair |

Website <http://www2.mmu.ac.uk>

Main switchboard

0161 247 2000