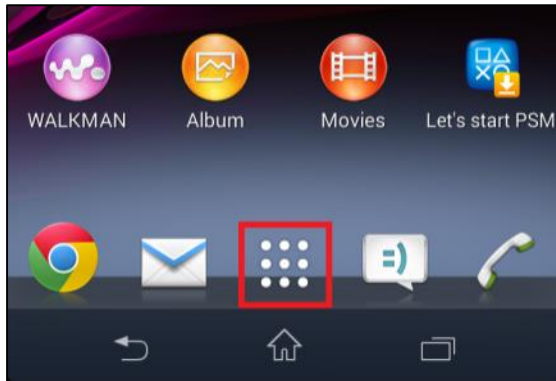
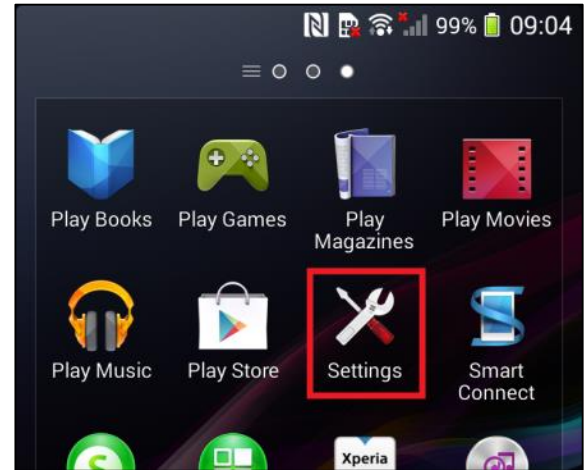


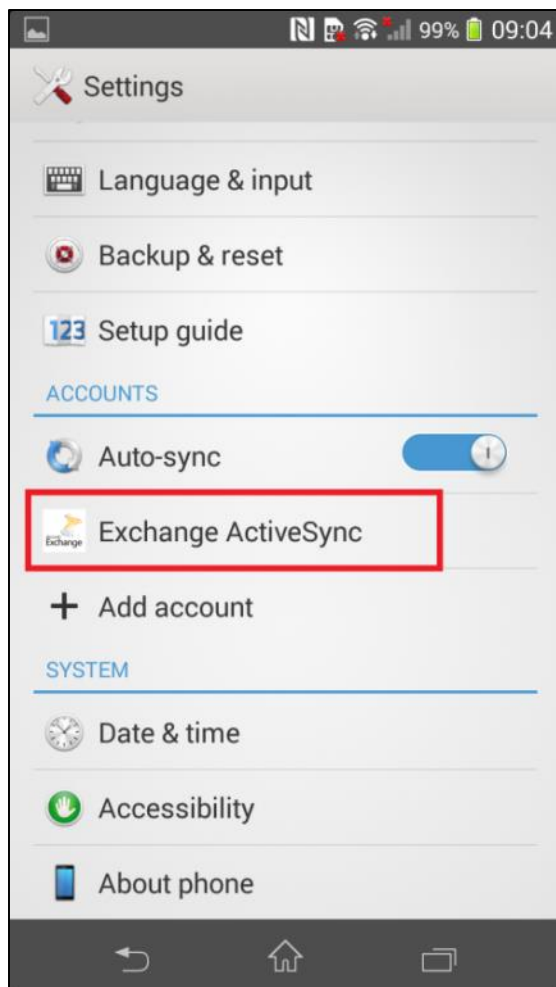
Open the **App Drawer** to display a list of all apps on the device.



Locate and open the **Settings** app.

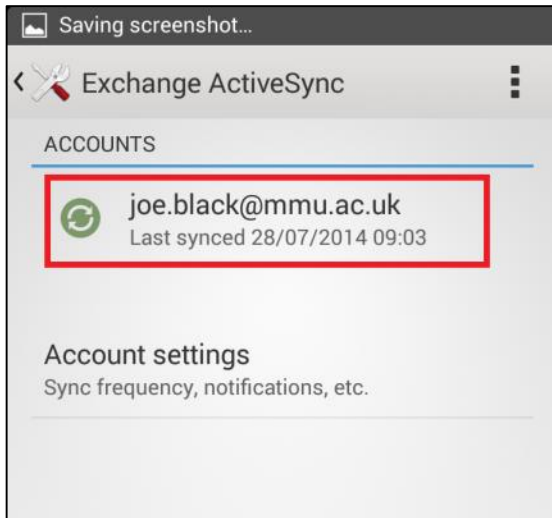


In the **Settings** app scroll down to the **Accounts** section and tap **Exchange ActiveSync**.

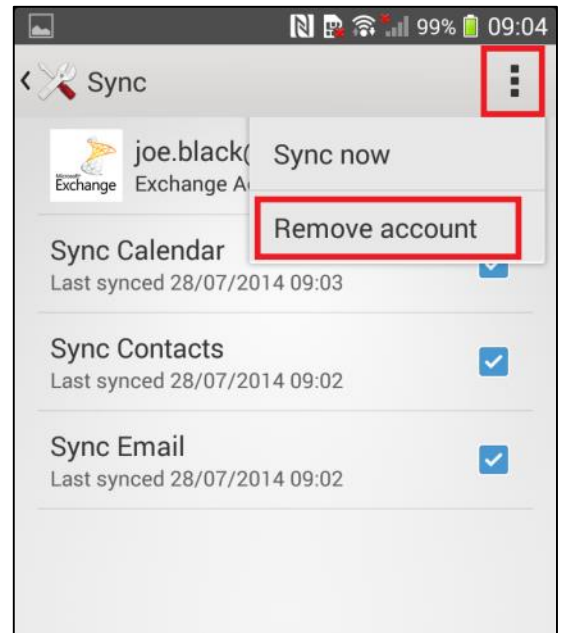


NB: The menus and settings on your personal Android device may differ slightly from those shown in this guide, as Android user interfaces tend to differ between devices. Please refer to the manufacturer's instructions of your personal Android device to carry out these steps. This guide was created using a Sony Xperia Android device.

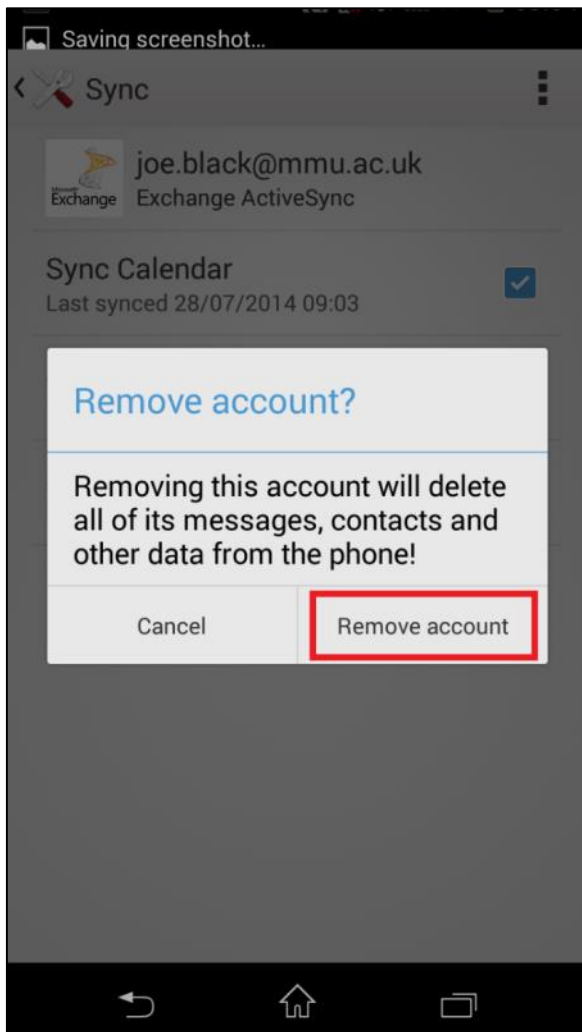
How to remove an email account from an Android device



In the **Exchange ActiveSync** menu, tap the account listed with your MMU email address.



On your MMU account page, tap the **three dots** in the top right corner of the screen. In the drop down menu, tap **Remove account**.



In the pop-up message that displays, tap **Remove account**.