

Manchester
Metropolitan
University



MMU
Cheshire
Postgraduate 2013

Welcome

Manchester Metropolitan University offers the highest concentration of postgraduate taught courses in the North West of England, many recognised by professional bodies and associations. We aim to give you the competitive edge, whatever the stage of your career. The University has a global vision which can help you realise your ambitions.





Studying within a lively and bustling postgraduate community at our campus in the heart of Cheshire, you will be taught by experienced professionals with a passion for their subject. The University has a strong research profile providing an excellent postgraduate environment for our students.

Professionally focused courses

Our Cheshire campus, 36 miles (58 km) south of Manchester, is renowned for the excellence of its educational, dramatic and sporting programmes and facilities.

We work hard to ensure our courses provide you with the skills and knowledge demanded by today's organisations. Indeed, many programmes have been created by our academics in consultation with businesses and professional bodies to reflect the needs of the industries they serve.

The University's Cheshire campus is the place to grow and develop your knowledge and realise your academic aspirations in the contemporary arts, business, sport, or socially relevant public sector organisations.

World-class facilities

A £70m campus development programme has just been completed, with brand new facilities which include the Cheshire Contemporary Arts Centre with drama, dance, music and sound recording studios and a world-class Exercise and Sports Science Centre featuring state-of-the-art laboratories, sports and fitness facilities and 3G football pitch. These outstanding facilities and expertise in sport science led to our Cheshire campus being recognised as an official 2012 London Olympics pre-games training camp.

Crewe location

MMU Cheshire is close to nearby National Parks, and offers excellent access to several cosmopolitan cities. Crewe is a thriving town with theatres, cinemas, and lively pubs and bars, and surrounding Cheshire offers everything from modern shopping, trendy cafés and bars to heritage gardens and houses. The area is also a popular centre for mountain and rock climbing, hiking and horse riding. Whilst the campus is large enough to provide an impressive range of facilities, it is compact enough to ensure a close and friendly community atmosphere.

Well connected

The University has over 4,000 staff across a range of disciplines, each with a passion for their particular area of expertise. The MMU Cheshire campus has over 700 staff, many of whom are experienced professionals with well-established links to their sectors, ensuring that your learning is up-to-date and relevant.

Staff in the Department of Business and Management are linked to local, national and international businesses whilst colleagues from the programme of Outdoor Studies have links with relevant associations including the Association of Mountaineering Instructors and the British Association of Snowsports Instructors.

The Advanced Practitioner course has professional and academic links with environmental sustainability projects, social housing, neighbourhood planning, and economic access projects for migrant communities.

World-leading research

MMU Cheshire is home to some of the most successful research teams in the University and provides opportunities for research degrees in a variety of fields. Most of our staff are researchers and professional practitioners, contributing to our growing reputation at an international level. This expertise is spread across the following departments:

- Business and Management
- Contemporary Arts
- Education
- Exercise and Sport Science
- Interdisciplinary Studies

Find out more about our research offering on page 23.

Case study: Paul Colman

Acting Chief Executive South Cheshire Chamber of Commerce

MSc Strategic Leadership and
Change graduate

I studied for my undergraduate degree at MMU Cheshire and really enjoyed my time here. I decided to return to University to study for a postgraduate degree for professional development reasons and to further my career. I found the MSc Strategic Leadership and Change course and it seemed really relevant to my role so it was the obvious choice.

There was a great sense of community on the course and I had the opportunity to mix with fellow students, which was important as I was in full time employment. I was able to learn from other students who came from a range of working environments and this allowed me to gain new perspectives on applying the theory I was learning to the workplace. I particularly benefited from the 'Strategic Thinking' module, which gave me a chance to apply theory to practice and reflect on my own organisation's strategy and vision.

The course helped me to focus on my own personal development, both in and outside of the workplace. It really helped me to develop within my current position in the company, but more importantly, allowed me to progress to a more senior role and help to take me where I am today.



Advancing your career

Studying for a postgraduate degree can increase your skills and knowledge in your chosen profession, making you more employable and a more attractive candidate to employers. In today's climate, it is increasingly important for your CV to stand out and a postgraduate degree can be a way of achieving this.

Partnerships and knowledge exchange

Our local connections are an important element of our strengths and identity. We engage in partnerships with schools, colleges and businesses nationally and internationally and actively seek opportunities for collaborative work and mutual knowledge exchange.

We encourage integrated activities such as consultancy, research and knowledge transfer. Our vision is to use our expertise, research capability and resources to support social and economic development of the region and the community.

Our strong academic programmes link real events and active networks with academic experts practising in their postgraduate specialism.

Industry connections

- Our partnership with the local authority (Cheshire East Council) to provide a pre-games training camp and support services ahead of the 2012 Olympic and Paralympic Games;
- Students in the Department of Contemporary Arts will have the opportunity to learn from some of the best producers and engineers in the music business, thanks to a new partnership with industry leaders Solid State Logic.
- The Department of Business and Management, is currently collaborating on a book relating to the development of management skills for the 21st Century organisation.
- The department for Interdisciplinary Studies has links with Public, Community and Voluntary groups at local, regional and national level which gives students practical examples to base their studies upon. These include social housing providers, Stop the Traffic, Refuge, MIND, MENCAP, Local Government Departments, the NHS, the Probation Service and the Probation Service and Race equality organisations.

Careers and employability support

Careers and employability support is available from the moment you join us, and for up to three years after the completion of your course. We have a range of careers and employability services available with dedicated and trained careers and employability advisors offering services including:

- career development workshops, offering support on writing CVs and application forms, preparing for interviews and networking;
- career guides, videos and resources;
- Going Global – an online database ideal for international students planning to return home to work or any postgraduate student looking to explore a career in a new country;
- advice on self-employment and freelancing; and
- employer visits and presentations.

Innovation in business

As well as our range of taught and research based programmes, we work with a range of local and national businesses to meet their needs in this fast-changing economy. We support organisations through consultancy work, Knowledge Transfer Partnerships and they, in turn, work with us to enhance our curriculum to ensure our graduates develop the skills and knowledge appropriate to their professional ambitions.



Postgraduate study

Studying for a postgraduate qualification is an important commitment which represents a worthwhile investment in your future.

We pride ourselves on offering a supportive environment for your postgraduate studies.

World-class learning and teaching facilities

A £70m campus development programme has just been completed, equipping the campus with brand new facilities including:

- A £30 million student accommodation complex.
- A £6 million Contemporary Arts Centre with its own theatre, rehearsal and performance studios, multimedia and recording music suites and gallery.
- A £10 million Exercise and Sport Science Centre fitted out with the latest testing and research equipment including an altitude training chamber, genetics laboratories and sports injuries clinic that has already attracted visiting elite athletes.

The on-site library, with 24-hour opening during busy periods, offers access to over 750,000 books, as well as e-journals, articles and e-books. The University can also lend you multimedia equipment including laptops, camcorders and projectors entirely free of charge.

Flexible study patterns

We offer a wide range of study modes across our courses, including full-time, part-time and distance learning routes to fit around your lifestyle. The study options are detailed on each course profile.

A supportive learning environment

In addition to academic support, we provide a range of personal and pastoral support and we take a personal interest in making sure that you are happy here. An on-site Student Information Point serves as a one-stop shop, providing comprehensive advice and information to all students on all student-related matters, including referral to specialist services.

There are also dedicated student support officers on campus to provide advice and guidance and to provide you with study skills support through individual sessions and group workshops on a whole range of topics. These include revision techniques, presentation skills, essay writing and time management. You will also have round-the-clock access to study skills resources on Moodle, your online virtual learning environment.

Specialist support for disabled students and those with specific learning difficulties

The Learner Development Service works closely with academic departments and other central services to support disabled students. Advisors can offer you confidential advice, information and support in relation to an ongoing health condition, disability or dyslexia. You can contact us before starting the course to speed up the process of getting support in place for when you begin your studies.
mmu.ac.uk/learnerdevelopment

Accommodation

There is a wealth of good quality, affordable homes for students including halls of residence, flats and shared houses. The University runs halls of residence with a range of comforts and services including en-suite bathrooms, catering and internet access.

More information is available at **mmu.ac.uk/accommodation/postgraduate**

Top quality teaching by exceptional professionals

Across our range of subject disciplines at MMU Cheshire, our experienced and knowledgeable staff are at the forefront of their fields. Our excellent connections and partnerships with renowned arts professionals, community-based practitioners, leading sporting and outdoor studies associations, local chambers of commerce and businesses ensure that our postgraduate and professional programmes are relevant to employers and well respected in the sector.



Jane Linden
Senior Lecturer
Contemporary Arts

"The Axis Arts Centre and its Open Project Space series provide a rich environment for the contemporary arts. Our students not only benefit from the professional programme of events but are encouraged to get involved and develop proposals for showcasing their own work."

Gareth Smith
Sport Development Coordinator

"Working within the Department of Exercise and Sport Science enables you to work with athletes from both ends of the sporting spectrum, from those participants starting out at the grassroots to those training and competing at international level such as the Olympic and Commonwealth Games."





Geraldine Lee-Treweek
**Programme Leader for MA
Advanced Practitioner Awards**

"Honing your professional knowledge and skills through studying for the MA Advanced Practitioner awards, will jump-start your career, unlock opportunities in your field and enable you to stand out from the crowd."



Diane Wright
**Associate Dean (Enterprise) and Head
of Department**
Department of Business and Management

"Both private and public sector organizations are today facing unprecedented change. The environment is turbulent and complex requiring adaptable and flexible organisations capable of responding effectively to the challenges of globalisation, increasingly sophisticated consumers and advances in technology. Our suite of postgraduate programmes will help you to develop the skills and techniques to continue learning or to seek out new career."



Linda Hammersley Fletcher
**Programme Area Leader for Education
Leadership and Management**

"The study of educational settings provides an understanding of educational processes, how power operates and the ways in which people and organisations behave at both the macro and micro levels. Such insights enable us to choose how we develop as educational, ethical and moral leaders and managers."

ing, 36,000 Students, Finance, Business Management, Science, Engineering, Healthcare, Social Work, Design, Computing and Technology, Art and Design, Humanities, Law, Teaching, Graduates, Career, Professional, Tutors, Courses, Learning, Academic Staff, Organisations, Companies, International Students, Class Facilities, Higher Education, £350 Million Investment, Buildings, Leading Edge Teaching, Study Facilities, Library, UK's Largest Providers of Science Technology Engineering and Mathematics Courses, Expertise, 70 Professional Bodies and Associations, Industrial Placements, Sandwich Courses, Real Projects, Over 4,000 Staff, Supportive, Study in Europe, Award Winning, Counselling Service, Knowledge, Friendly, Sports Facilities, Community, Vibrant, Diverse, Faith, Student Book Production, Accommodation, Stories, Biomechanics, Motor Control, Biochemistry, Computer Games, Usability, Laboratory, Rehearsal, Recording Music Suites, IRM, Orthopaedics, Forensics, Dynamics, New Media Technology, Business School, MBA, Fashion Show, Super-Campus, Psychology, Lecture Theatres, Cutting-Edge Laboratories, Specialist Facilities, Moodle, Books, State-of-the-Art Equipment, MSc, Politics, Electronic Books, Induction, Social Events, PgDip, Study Support, Student Exchange, Study Abroad, Integrated Learning, Developing, Employability Skills, Work Placements, CV Writing, Effective Networking, Recruitment Fairs, Coffee Bar, Music Venues, Alumni, Success, Magazine, Ambassador, Architecture, Biology, Healthcare Sciences, Acting, Chemistry, Computing and Digital Technology, Dance, Drama, Music, Education, Environmental Geographical Sciences, Engineering, English and Creative Writing, Fashion, Clothing and Textiles, Food, Tourism, Hospitality, Health, Psychology, Study Languages, Law, Sport Science, Philosophy, Criminology, Sociology, Politics, Research, Evaluation, Conclusion, Speeches, Study Groups, Development, Practical, Filmmaking, Theories, Computer Suite, Screen Printer, MA, Letterpress, Machinery, Filmmaking, History, Writing, Online, Digital, Business and Management Courses, Photographic Darkroom, Photoshop, Sports, and Metal Workshops, Painting Studio, Video Animation, Etching, Cultures, IT Software, Interior Design, Fashion Design, Illustration, Creative, Multimedia, Fine Art, Critical Thinking, Foreign Exchange, Seminars, Sessions, Culture, Skills, Online, Presentations, Note Taking, Clubs and Societies, Guidance and Support, Cafe, Research Rooms, Researchers, Learner Development, Orientation, Challenges, Open Days, Student Performance, Net-Books and Laptops, Hub, **MMU Cheshire**, Biodiversity, Faith, Graduate Support, MA, Success, Diversity, Student Information Points, MSc, Dance, Sustainable, WiFi, IT Zones, Counselling, Employability, Vertical MRI Scanner, Acupuncture, Clinical Skills, Performing Arts, Olympic Training Centre, Childhood Studies, Formula Student, Wind Tunnel, Mock Crime Scene, Mock Court Room, Practical Skills, CAD, Rapid Prototyping, Project Management, All Saints Campus, Didsbury Campus, Cheshire Campus, Learning, Professional Development, Lifelong Learning, Virtual Learning, Mechanical Engineering, Creative Writing, English, Tourism, Social History, Web Development, Ecology, Internships, Enrolment, Interview, Portfolios, Part-Time, Interactive, Virtual Learning Environment, Computer Forensics, Marketing, Biology, Animal Behaviour, Networking, Ambassadors, 3G Football Pitch, Exchange, Choices, Genetics and Cell Biology, Gallery Spaces, Nutrition, Orthopaedics, Gerontology, Exercise Science, Bio-engineering, Sports Injury Clinic, Altitude Training Chamber, Green Credentials, Student PCs and Macs, Workshops, Snack Bar, PhD, IT Zones, Professionals, Academics, Professors, Award-Winning, Health Professionals, Microsoft, Poet Laureate, Inspiration, Embroidery Machine, Blue-Chip Companies, Private Sector, Public Sector, Post-Class Support, Central, Cultural Studies, Acting, Conservation, Food Technology, On-site Restaurant, Meeting Rooms, Health, Therapy, Speech Pathology, Linguistics, Philosophy, Politics, Multimedia, Computer Games Technology, International Politics, Mathematics, MA, Sociology, Music Education, Human Biology, Green, Fashion Buying, Event Management, Performance, Post Production, Technology for Film TV and Radio, Study in North America, Social Networking, Pharmaceutical Chemistry, Advertising, Human Resources, International support, PhD, Halls of Residence, Learner Development Team, Orientation, Challenges, Student Performance, Biodiversity, Graduate Success, Net-Books and Laptops, Diversity, Faith, Student Information Points, Sustainable, WiFi, IT Zones, Counselling, Employability, Vertical MRI Scanner, Acupuncture, Clinical Skills, Performing Arts, Olympic Training Centre, Childhood Studies, Formula Student, Wind Tunnel, Mock Crime Scene, Exhibition Design, Crime Scene, Mock Court Room, Practical Skills, CAD, Rapid Prototyping, Project Management, Video Animation, 70 Professional Bodies and Associations, Cheshire Campus, Human Resources, PgCertificate, Digital, English, Technology, Award-Winning, Lifelong, Photoshop, Inspiration, Interactive, Filmmaking, Bio-engineering, Exchange, Internships, Cultures, Online, Lecture Theatres, Workshops, Poet Laureate,

Exercise and Sport Science	12	
Contemporary Arts	16	
Business and Management	17	
Advanced Practitioner	20	
Outdoor Education	21	

Our postgraduate courses are listed by subject area on the following pages. Many of our MA and MSc programmes can be studied as a Postgraduate Certificate or Diploma.

The difference between Postgraduate Certificate, Diploma and an MA or MSc is in the amount of credits the course contains. An MA or MSc contains 180 credits – 120 credits of taught units and 60 credits for a dissertation.

If you successfully complete half of the taught units (60 credits), you are awarded a Postgraduate Certificate. If you successfully complete all of the taught units (120 credits), you are awarded a Postgraduate Diploma.

If you complete the taught units (120 credits) successfully you can then write a dissertation or research project (another 60 credits) and are awarded a MA and MSc. A fee is listed for each course entry. These fees are correct at the time of going to press and are subject to change. For up-to-date fee information, please visit mmu.ac.uk/courses

Exercise and Sport – Sport Development MA

Length and Mode 1 year full-time, 2-3 years part-time

Fees Full-time UK and EU students: £4,100

Part-time UK and EU students: £455 per 20 credit unit.

A Masters qualification typically comprises 180 credits.

Non-EU overseas full-time students: £12,500

Entry requirements

To be admitted to the Masters programme you should normally hold a good honours degree, typically a first or upper second classification in a related area or in an area of study accompanied by significant professional or personal experience. International Students please see mmu.ac.uk/international or page 26.

The course

Intellectually challenging and discipline-focused, this programme prepare you for a career within your chosen sub-discipline of exercise and sport at an advanced level. Underpinned by research and practitioner expertise, an interdisciplinary perspective is encouraged. Opportunities for interaction across biomechanics, physiology and psychology, coaching studies, sport development, sports injury are included.

The course is flexible: major and minor in chosen subjects for your desired combination e.g. MA Exercise and Sport (Sport Development with Psychology).

Units

• Qualitative and Quantitative Research Methods • Research Methods and Design • Professional Skills • Social Marketing for Sport and Physical Activity • Sport and Physical Activity: Measuring Impact • Sport Development: Policy and Planning • Sport: A Broader Social Agenda • International Perspectives in Sport Development • Research Project

Study pattern

Full-Time: Attendance at the University for 2 days per week from September to Easter, plus at least one full weekend. From Easter until completion attendance will be dependent on the research project being undertaken.

Part-Time: University attendance for one day per week from September to Easter plus at least one full weekend in the first year.

In the second year, one day a week for September to Easter and then Easter to completion of research project as necessary.

Career prospects

From research programmes to sport science/coaching at the British Olympic Medical Centre, English Institute of Sport and Scottish and Welsh Sports Council, to consultancy or teaching positions at institutes of further and higher education.

For more detailed information on course content visit mmu.ac.uk/10265

Exercise and Sport – Coaching Studies MA

Length and Mode 1 year full-time, 2-3 years part-time

Fees Full-time UK and EU students: £4,100

Part-time UK and EU students: £455 per 20 credit unit.

A Masters qualification typically comprises 180 credits.

Non-EU overseas full-time students: £12,500

Entry requirements

To be admitted to the Masters programme you should normally hold a good honours degree, typically a first or upper second classification in a related area or in an area of study accompanied by significant professional or personal experience. International Students please see mmu.ac.uk/international or page 26.

The course

Intellectually challenging and discipline-focused, this programme prepares you for a career within your chosen sub-discipline of exercise and sport at an advanced level. Underpinned by research and practitioner expertise, an interdisciplinary perspective is encouraged. Opportunities for interaction across biomechanics, physiology and psychology, coaching studies, sport development and sports injury are included.

The course is flexible: major and minor in chosen subjects for your desired combination e.g. MA Exercise and Sport (Coaching Studies with Psychology).

Units

• Foundation of Coaching • Historical and Cultural • Contemporary Issues and Policy in • Coaching and its Management • Supporting Coaches and their CPD • The Coach as Educator • Issues in Coaching Pedagogy • Professional Skills • Quantitative and Qualitative • Research Methods • Research Methods and Design • Research Project

Study pattern

Full-Time: Attendance at the University for 2 days per week from September to Easter plus at least one full weekend. From Easter until completion attendance will be dependent on the research project being undertaken.

Part-Time: University attendance for one day per week from September to Easter plus at least one full weekend in the first year.

In the second year, you will study one day per week from September to Easter and then from Easter until completion of research project as necessary.

Career prospects

Masters graduates have the potential to progress into research programmes and positions, sport science/coaching within a sport governing body or with the English Institute of Sport, Scottish and Welsh Sports Council or Sports Coach UK. There are also consultancy and teaching opportunities at institutes of further and higher education.

For more detailed information on course content visit mmu.ac.uk/10266

Exercise and Sport – Psychology

MSc

Length and Mode 1 year full-time, 2-3 years part-time

Fees Full-time UK and EU students: £4,100

Part-time UK and EU students: £455 per 20 credit unit.

A Masters qualification typically comprises 180 credits.

Non-EU overseas full-time students: £12,500

Entry requirements

To be admitted to the Masters programme you should normally hold a good honours degree, typically a first or upper second classification in a related area or in an area of study accompanied by significant professional or personal experience. International Students please see mmu.ac.uk/international or page 26.

The course

Intellectually challenging and discipline-focused, this programme prepares you for a career within your chosen sub-discipline of exercise and sport at an advanced level. Underpinned by research and practitioner expertise, an interdisciplinary perspective is encouraged. Opportunities for interaction across biomechanics, physiology and psychology, coaching studies, sport development and sports injury are included.

The course is flexible: major and minor in chosen subjects for your desired combination e.g. MSc Exercise and Sport (Psychology with Biomechanics).

Units

• Foundation Psychology • Cognition and Emotion in Exercise and Sport • Needs Analysis in Consultancy • Neuroscience in Exercise and Sport • Qualitative and Quantitative Research Methods • Social Psychology of Performance Sport • Professional Skills • Research Methods and Design • Research Project

Study pattern

Full-time: Attendance at the University for 2 days per week from September to Easter plus at least one full weekend. From Easter until completion attendance will be dependent on the research project being undertaken.

Part-time: University attendance for one day per week from September to Easter plus at least one full weekend in the first year.

In the second year, one day a week for Terms 1 and 2 and then Easter to completion of research project as necessary.

Career prospects

Masters graduates have the potential to progress into research programmes and positions, sport science/coaching within a sport governing body or with the English Institute of Sport, Scottish and Welsh Sports Council or Sports Coach UK. For those who progress to achieve BPS Chartered status and HPC registration there are also many opportunities to practise in an applied environment either in exercise or sport. There are also consultancy and teaching opportunities at institutes of further and higher education.

For more detailed information on course content visit mmu.ac.uk/10269

Exercise and Sport – Sport Injury

MSc

Length and Mode 3 year part-time with distance learning

Fees Part-time UK and EU students: £1,150 per year.

A Masters qualification typically comprises 180 credits.

Entry requirements

To be admitted to the Masters programme you should normally hold a good honours degree, typically a first or upper second classification in a related area or in an area of study accompanied by significant professional or personal experience. International Students please see mmu.ac.uk/international or page 26.

The course

This programme provides an intellectually challenging and discipline-focused, postgraduate course of education – and is concerned with your development and professional preparation for a career within your chosen sub-discipline of exercise and sport at an advanced level. Underpinned by research and practitioner expertise, the programme allows opportunities for interaction with fellow students across the fields of biomechanics, physiology and psychology, coaching studies, sport development and sports injury. In this way, an interdisciplinary perspective on exercise and sport is actively encouraged.

In addition to specific subjects, the course contains units common across all routes in Professional Skills, Research Methods Qualitative and Quantitative, Research Skills and a Research Project.

Units

• Foundation Exercise and Sport Science • Exercise and Sport Science Applications • Professional Skills and Practice • Sport Science and Injury • Management of Sports Injury • Research Methods and Design • Professional Skills • Qualitative and Quantitative Research Methods • Research Project

University attendance of five weekends per year in the first two years; attendance as necessary for completion of the research project, plus two days.

Career prospects

From research programmes to sport science/coaching at the British Olympic Medical Centre, English Institute of Sport and Scottish and Welsh Sports Council, to consultancy or teaching positions at institutes of further and higher education.

For more detailed information on course content visit mmu.ac.uk/10270

Exercise and Sport – Biomechanics

MSc

Length and Mode 1 year full-time, 2-3 years part-time

Fees Full-time UK and EU students: £4,100

Part-time UK and EU students: £455 per 20 credit unit.

A Masters qualification typically comprises 180 credits.

Non-EU overseas full-time students: £12,500

Entry requirements

To be admitted to the Masters programme you should normally hold a good honours degree, typically a first or upper second classification in a related area or in an area of study accompanied by significant professional or personal experience. International Students please see mmu.ac.uk/international or page 26.

The course

Intellectually challenging and discipline-focused, this programme prepares you for a career within your chosen sub-discipline of exercise and sport at an advanced level. Underpinned by research and practitioner expertise, an interdisciplinary perspective is encouraged.

The programme is flexible: major and minor in subjects to achieve your desired combination e.g. MSc Exercise and Sport (Biomechanics with Physiology).

Units

- Foundation Biomechanics • Analysing Movement
- Modelling and Simulation • Qualitative and Quantitative Research Methods • Applied Techniques in Exercise and Sport
- Biological and Non-biological Materials in Exercise and Sport
- Professional Skills • Research Methods and Design
- Research Project

Study pattern

Full-Time: Attendance at the University for 2 days per week from September to Easter plus at least one full weekend. From Easter until completion attendance will be dependent on the research project being undertaken.

Part-Time: University attendance for one day per week from September to Easter plus at least one full weekend in the first year.

In the second year, one day a week from September to Easter and then Easter to completion of research project as necessary.

Career prospects

Masters graduates have the potential to progress into research programmes and positions, sport science/coaching within a sport governing body or with the English Institute of Sport, Scottish and Welsh Sports Council or Sports Coach UK. In addition there are growing opportunities in the health domain and in the development and manufacture of sports equipment. There are also consultancy and teaching opportunities at institutes of further and higher education.

For more detailed information on course content visit mmu.ac.uk/10268

Exercise and Sport – Physiology

MSc

Length and Mode 1 year full-time, 2-3 years part-time

Fees Full-time UK and EU students: £4,100

Part-time UK and EU students: £455 per 20 credit unit.

A Masters qualification typically comprises 180 credits.

Non-EU overseas full-time students: £12,500

Entry requirements

To be admitted to the Masters programme you should normally hold a good honours degree, typically a first or upper second classification in a related area or in an area of study accompanied by significant professional or personal experience. International Students please see mmu.ac.uk/international or page 26.

The course

Intellectually challenging and discipline-focused, this programme prepares you for a career within your chosen sub-discipline of exercise and sport at an advanced level. Opportunities for interaction across biomechanics, physiology and psychology, coaching studies, sport development and sports injury are included.

The programme is flexible: major and minor in chosen subjects for your desired combination e.g. MSc Exercise and Sport (Physiology with Biomechanics).

Units

- Systems Physiology and Exercise Testing • Biological Basis of Human Movement • Cardiorespiratory Physiology
- Clinical Exercise Physiology • Nutrition (optional)
- Exercise and Sport Genetics (optional) • Professional Skills
- Quantitative and Qualitative Research Methods • Research Methods and Design • Research Project

Study pattern

Full-time: Attendance at the University for 2 days per week from September to Easter and at least one full weekend. From Easter until completion attendance will be dependent on the research project being undertaken.

Part-time: University attendance for one day per week from September to Easter plus at least one full weekend in the first year.

In the second year, one day a week from September to Easter and then Easter to completion of research project as necessary.

Career prospects

Masters graduates have the potential to progress into research programmes and positions, sport science/coaching within a sport governing body or with the English Institute of Sport, Scottish and Welsh Sports Councils or Sports Coach UK. In addition there are growing opportunities in the health domain for exercise specialists. There are also consultancy and teaching opportunities at institutes of further and higher education.

For more detailed information on course content visit mmu.ac.uk/10267



Case study: Dawn Richmond-Gordon

MA Contemporary Arts

I was really attracted to the MA Contemporary Arts because unlike other courses, it combines many different types of media. I was also impressed by the excellent facilities on offer, including amazing performance spaces, and it offered a lot of flexibility for my creativity.

I chose this course because it directly followed on from my undergraduate degree and was perfect for what I wanted to explore academically. I study alongside many high calibre students from various disciplines, such as music, dance and live arts. This has enabled me to gain knowledge and inspiration from my peers in an environment where I'm free to express anything I want to. The course has certainly brought a lot out of me. I love the campus too; the space is beautiful and green and is the perfect environment for me to work in.

The level of support that I have received has been fantastic: you can choose to access as little or as much as you need. It's a big difference from being an undergraduate but I find that the harder you work, the more rewarding it is. Once you start your course and find your feet, the course and its community are brilliant.

Contemporary Arts

With routes in dance, drama, live arts, theatre, music, visual arts and writing.

MA

MA by Research

Length and Mode 1 year full-time, 2-3 years part-time

Fees Full-time UK and EU students: £4,100

Part-time UK and EU students: £455 per 20 credit unit.

A Masters qualification typically comprises 180 credits.

Non-EU overseas full-time students: £12,500

Entry requirements

You will normally hold an good honours degree in the arts, preferably with upper second or first classification, and/or will have substantial relevant professional experience. Applicants are chosen on the basis of their application form and an interview. International Students please see mmu.ac.uk/international or page 26.

The course

Contemporary creative practice draws upon a rich diversity of influences and forms. MA Contemporary Arts (MACA) programme has been developed for arts practitioners from a range of disciplines (including dance, drama, live arts, theatre, music, visual arts and writing) who wish to further their own practice within a critical context. This MA also offers the opportunity to consider – and possibly experiment with – cross-disciplinary methods. The course has a distinctive track record of graduates producing innovative work within and between arts subject domains, and is considered a potential leader in the field for ‘practice-as-research’ methodology.

Whether working individually or in collaboration, you will be encouraged to develop a ‘conceptual framework’ for your practice which will be supported by specialist supervision and a regular programme of lectures, seminars and workshops as well as access to specified practical classes. You will enjoy regular contact with a diverse range of upcoming work from both the Department and the professional circuit and in turn will become familiar with, and contribute to, current debates on contemporary practice. The MA in Contemporary Arts is designed to enable the student to determine their own subject-specific award outcome such as MACA (Dance).

You can expect an exciting and varied arts environment with good facilities and excellent technical support. A large, mixed-disciplined student community and exemplary Contemporary Arts Centre provision add to the unique agenda.

Units

- Arts Praxis 1
- Arts Praxis 2
- Contemporary Arts Issues



Individual tutorials and research cluster groups will enable you to develop work with staff and students with compatible interests. During the course of the programme you will be assessed on two major practical projects, with supporting documentation and critical reflection (Praxis 1 & 2); and a related critical essay and a dissertation or negotiated complementary writing project (Contemporary Arts Issues).

A showcase feature of the programme is the concept of ‘praxis’, whereby critical reflection is embedded through practice. Students are also invited to consider the role of documentation within ‘praxis’ and to curate work each year in the context of the public showing event.

Career prospects

With well established links to the professional world, this versatile and effective programme has broad appeal. A suitable choice for professional practitioners wishing to develop their careers, its multi-disciplinary content coupled with practice based research is also ideal preparation for work in the arts in higher education. In addition, it is highly appropriate for those wishing to engage in practice as research and might want to go on to study at MPhil or PhD level.

MA by Research:

Those who wish to engage with the development of a single sustained project with the support of a supervisory team, or to pursue historical/theoretical (non-praxical) research, are invited to consider this alternative route.

For more detailed information on course content visit mmu.ac.uk/10108



Business Management – Top Up Programme MSc

Length and Mode 2 years part-time

Entry September and January

Fees Full-time UK and EU students: £4,600

Non-EU full-time overseas students: £10,250

Part-time UK and EU: £510 per 20 credit unit (a Masters qualification typically comprises 180 credits).

Entry requirements

The MSc Business Management top up programme is primarily designed for holders of Level 7 professional qualifications from the CMI or CIPD. Alternative equivalent qualifications will be considered. Applicants will normally be mature and experienced managers or those seeking a career change or career enhancement through continual professional development. International Students please see mmu.ac.uk/international or page 26.

The course

With organisations in both the private and public sector facing unprecedented change, there is an increased emphasis on the importance of ongoing professional development to ensure managers have access to the tools, techniques and specialist knowledge required of effective management and leadership.

This one-year top-up course enables you to continue your development beyond the qualification routes provided by your professional body to achieve a Master's qualification.

Units

You will achieve a Masters qualification through a mix of Accreditation of Prior Learning (APL), plus two MSc units and completion of a dissertation. The usual combination of units would be:

Core unit

- Developing Professional Practice

Elective units

- Strategic Management Practice • Thinking and Leading Strategically • Dissertation

This course is taught by a multidisciplinary team of Business specialists consisting of full and half-day workshop sessions and work-based learning activities to provide a flexible study model for busy professionals.

You will be assessed through assignments based upon analysis of the employer organisations of case studies. Your dissertation will normally be focused upon a business management research topic agreed between yourself and your dissertation supervisor.

Career prospects

This top up programme is designed to enable students to develop and apply new knowledge, management skills and techniques in the workplace in a wide variety of business contexts.

For more detailed information on course content visit
mmu.ac.uk/10146

Business Management MSc

Length and Mode 1 year full-time, 2-3 years part-time

Entry September and January

Fees UK and EU full-time students: £4,600

Non-EU overseas full-time students: £10,250

UK and EU part-time students: £510 per 20 credit unit (a Masters qualification typically comprises 180 credits).

Entry requirements

You will normally have a good honours degree (or equivalent) in any discipline; a relevant subject is preferred. Applicants from a different background may be admitted if they have equivalent professional qualifications or proven management experience in a relevant field. International Students please see mmu.ac.uk/international or page 26.

The course

Recognising that most business organisations today face unprecedented change this programme has been devised to create sophisticated management professionals. To achieve this, you will study three core units, and then select three complementary electives to provide you with an element of specialisation related to your professional interests.

By studying this internationally recognised award, you will develop a keen awareness of the most up to date management thinking and practice. You will also develop an appreciation of cutting edge techniques for managing people, thinking strategically and a full range of dynamic marketing techniques.

Units

Core units

- Managing Organisations in a Global Context • Strategic Management Practice • Developing Professional Practice • Dissertation

Elective units

- Relationship Marketing • International Capital Markets • Integrated Marketing Communications • Advanced Management Accounting • Organisational Change and Transition • International Marketing Strategy • Corporate Financial Strategy • Thinking and Leading Strategically • Managing Employee Engagement and Performance

As a full time course, this programme is delivered during the day, but for part time students two study patterns are offered – afternoon/evening or evening only, although some units may not be available in both patterns.

You will be assessed by a combination of assignments and written exams.

Career prospects

For those already in business or wishing to embark on a career in business, this course may provide opportunities to gain an internationally-recognised and career-enhancing qualification and to share experience whilst developing new skills and expertise.

For more detailed information on course content visit
mmu.ac.uk/10145

Combined Studies

MSc

Length and Mode 1 year full-time, 2-3 years part-time

Fees UK and EU full-time students: £4,600

Non-EU full-time overseas students: £10,250

UK and EU part-time students: £510 per 20 credit unit
(a Masters qualification typically comprises 180 credits).

Entry requirements

You will normally have a good honours degree (or equivalent) in any subject. Applicants lacking the normal academic entry requirements may also be considered if they have degree equivalent professional qualifications or relevant management experience. International Students please see mmu.ac.uk/international or page 26.

The course

As the world of business becomes more complex demand is growing for effective and multi-faceted management professionals who can demonstrate their versatility and broad knowledge base.

Offering the opportunity to follow both a major and a minor pathway, this course provides you with a unique opportunity to tailor a programme of study to suit your particular circumstances and career aspirations. With the ability to select any pathway as either your major or minor, you will study four units (including a core Professional Practice unit) in your major pathway, then two in your minor. You will also undertake a dissertation in the major pathway to achieve MSc level.

Through this flexible and complementary approach to study, you will develop multiple skills and an increased level of business related skills and experience.

Units

• Business • Marketing • Strategy • Finance • Organisational Development • Organisational Change • Leadership

This course is taught at the Cheshire Campus in Crewe by a multidisciplinary team of management specialists drawing on their own research and professional experience. To find out more about the specific details of the various pathways, please refer to their course entries in this prospectus.

You will be assessed continually through assignments, case study presentations and written examinations. Your dissertation will normally take the form of a substantial piece of research or consultancy project, depending on your chosen major pathway.

Career prospects

For those already working in business, or those looking to embark on a career, this combined programme may provide opportunities to gain an internationally-recognised and career-enhancing qualification and to share experience whilst developing new skills and expertise.

For more detailed information on course content visit
mmu.ac.uk/10155

Financial Management

MSc

Length and Mode 1 year full-time, 2-3 years part time

Entry September and January

Fees UK and EU full-time students: £4,600

Non-EU full-time overseas students: £10,250

UK and EU students part-time: £510 per 20 credit unit
(a Masters qualification typically comprises 180 credits).

Entry requirements

You will normally have a good honours degree (or equivalent) in any discipline, ideally relevant. Applicants from a different background may be admitted if they have equivalent professional qualifications or proven management experience in a relevant field. International Students please see mmu.ac.uk/international or page 26.

The course

Developed to address the needs of a business environment characterised by change and increased complexity, this programme is designed to develop sophisticated managers with practical skills in strategic thinking and a deep understanding of the financial aspects of modern business.

With a flexible, modular programme tailored to your needs, this course is ideal for people preparing to embark upon a career in management or those already working professionally seeking a career change or to hone their financial management skills. With a core syllabus of four units, you will also be invited to select two elective units to provide an element of specialisation relevant to your professional interests.

Units

Core units

• International Capital Markets • Corporate Financial Strategy
• Advanced Management Accounting • Developing Professional Practice • Dissertation

Two elective units from:

• Global Strategic Management • Organisational Change and Transition • Entrepreneurship and Innovation • Thinking and Leading Strategically

As a full time course, this programme is delivered during the day, but for part time students two study patterns are offered – afternoon/evening or evening only, although some units may not be available in both patterns. Depending on electives, some units may be available on a blended workshop basis. You will be assessed by a combination of assignments and written exams.

Career prospects

For those already in business, this course may provide opportunities to gain an internationally-recognised and career-enhancing qualification and to share experience whilst developing new skills and expertise.

For more detailed information on course content visit
mmu.ac.uk/10154

Marketing Management

MSc

Length and Mode 1 year full-time, 2-3 years part-time
Entry September and January

Fees UK and EU full-time students: £4,600

Non-EU full-time overseas students: £10,250

UK and EU part-time students: £510 per 20 credit unit (a Masters qualification typically comprises 180 credits).

Entry requirements

You will normally have a good honours degree (or equivalent) in any subject. Applicants who do not meet the normal academic entry requirements may also be considered if they have degree equivalent professional qualifications or significant relevant management experience. International Students please see mmu.ac.uk/international or page 26.

The course

Designed as a flexible programme to accommodate your employment and personal circumstances, this course has been devised to enhance your practical marketing management skills. With an additional focus on deepening your understanding of the core concepts and competencies that underpin this increasingly important business area, this course will provide you with an opportunity to combine real world experiences with theory.

Taught in six units, this programme features four core units and an opportunity to choose two elective units. Please note – candidates without a related degree (or equivalent) may be required to undertake development units before beginning masters level studies.

Units

Core units

• International Marketing Strategy • Integrated Marketing Communications • Relationship Marketing • Developing Professional Practice • Dissertation

Elective units

• Global Strategic Management • Organisational Change and Transition • Thinking and Learning Strategically

You will be assessed continually through a series of case study presentations and written examinations. Your dissertation will usually be based on empirical research.

Career prospects

Ideal for both those already working in management, and those seeking to establish a career, this course seeks to enhance your skills and increase your understanding of marketing management. It may provide opportunities to gain an internationally-recognised and career-enhancing qualification and to share experience whilst developing new skills and expertise.

For more detailed information on course content visit
mmu.ac.uk/10161

Strategic Leadership and Change

MSc

Length and Mode 1 year full-time, 2-3 years part-time
Entry September and January

Fees UK and EU full-time students: £4,600

Non-EU overseas full-time students: £10,250

UK and EU part-time students: £510 per 20 credit unit (a Masters qualification typically comprises 180 credits).

Entry requirements

You will normally have a good honours degree (or equivalent) in any subject. Applicants lacking the normal academic entry requirements may also be considered if they have degree equivalent professional qualifications or significant relevant management experience. International Students please see mmu.ac.uk/international or page 26.

The course

With both private and public sector organisations facing change on an unprecedented scale, the commercial environment has become turbulent and complex. It is now more important than ever for organisations to be flexible and adaptable to respond effectively to the key challenges of globalisation, increasingly sophisticated customer bases and advances in technology – all factors that place even greater emphasis on strong leadership.

This programme will be ideal for you, if you are working within management. It will provide you with a strong understanding of the nature of effective leadership and change by encouraging you to draw on your own experiences. The benefit of using real observations is that it will help you develop solutions of practical significance.

Units

• Developing Professional Practice • Managing Organisation in a Global Context • Strategic Management Practice • Thinking and Leading Strategically • Organisational Change and Transition • Managing Employee Engagement and Organisational Performance • Dissertation

This programme is taught through a blended learning approach consisting of full day and half day workshop sessions and work-based learning activities to assist your time management.

You will be continually assessed through assignments, case study presentations and your dissertation will usually be based on empirical research.

Career prospects

Ideal for those already in business or wishing to embark on a career in business, this course may provide opportunities to gain an internationally-recognised and career-enhancing qualification and to share experiences whilst developing new skills and expertise.

For more detailed information on course content visit
mmu.ac.uk/10154



Advanced Practitioner Awards (Public, Community and Voluntary Sector Studies) or (Abuse Studies) MA

Length and Mode Minimum 2 years part-time (no maximum completion date)

Fees £455 per 20 credit unit. A masters qualification typically comprises 180 credits.

Entry requirements

Candidate selection is based on possession of a first or upper second class honours degree or equivalent professional qualifications and references which should preferably be from former university teachers or current or voluntary work employers. Candidates without a degree but with suitable experience in Public, Community or Voluntary Sectors or in working with Abuse Issues can apply under our APEL (Accreditation of Prior Experiential Learning) scheme. Applicants may be invited to interview with evidence of qualifications and experience. International Students please see mmu.ac.uk/international or page 26.

The courses

Professionals in the community and voluntary sectors – and in specialist safeguarding and abuse-related work – are increasingly being challenged to deal with highly complex social issues. Working in these areas requires a depth of knowledge, analysis and reflective thinking that is supported and encouraged within Master' level study.

These programmes aim to develop your skills professionally and personally. Designed for people who are working full or part time in public, community or voluntary sector organisations and groups or who are volunteering, it will enable you to utilise your workplace experiences. By acquiring an understanding of social problems and solutions and familiarity with academic research in key fields, it can empower you to apply learning back to your own context. In addition, our integrated professional networking facilitates useful partnership and collaborative learning.

Units

MA Advanced Practitioner (Abuse Studies) Core Units

- Understanding Abuse Studies
- Academic Skills
- Reflexive Practitioner
- Plus Dissertation
- And 3 elective units*

MA Advanced Practitioner (Public, Community and Voluntary Sector Studies) Core units

- Understanding Public, Community and Voluntary Sector Contexts
- Academic Skills
- Reflexive Practitioner
- Plus Dissertation
- And 3 elective units*

Elective units

- Applied Psychology
 - Community Leadership
 - Social Sustainability and Working with Change in Communities
 - Violence and Aggression in Society
 - Strategic Management Practice
 - Corporate Financial Strategy
 - Crime and Victimology
 - Applied Ethical Issues in Professional Life
 - Globalisation and Social Change
 - Advanced Research Practice
 - Principles of Safeguarding Practice
 - Sustaining an Organisation
 - The Commercial Sex Industry
 - Learning in Outdoor Environments
 - Skills in Counselling and Communication
 - Professional Mentoring
- *Options are subject to availability

Designed in consultation with specialist professionals – in areas such as the police, health and social care settings, third sector and faith organisations – a flexible pattern of learning is available, often with intensive blocks of 2 days with online learning in-between. The programme is generally assessed by coursework-based assignments.

Career prospects

The MA Advanced Practitioner Programme offers the chance to study and address real world issues, network with other professionals and develop your potential in your chosen field.

For more detailed information on course content visit mmu.ac.uk/10257

Outdoor Education

MA/MSc

Length and Mode 1 year full-time, 2-3 years part-time

Fees Full-time UK and EU students: £4,100

Part-time UK and EU students: £455 per 20 credit unit.

A Masters qualification typically comprises 180 credits.

Full-time non-EU overseas students: £12,500

Entry requirements

To be admitted to the Masters programme you should normally hold a good honours degree, typically a first or upper second classification in a related area or in an area of study accompanied by significant professional or personal experience. International Students please see mmu.ac.uk/international or page 26.

The course

This programme will enable you to undertake study appropriate to your level of experience and skill, enabling you to develop the skills of leadership, risk management, connection with self and planning. It will allow you to develop a heightened sense of identity and place within the context of adventure. With strong opportunities for work-based learning activities, there are study pathways in geographical science, psychology, sport, business and countryside management.

Essentially practical in approach, the programme has been designed for flexible learning. You might, for example, decide to engage in the study of outdoor recreation for health benefits or study outdoor management development as used by businesses to develop an empowered workforce.

Units

Core units

- Developing Professional Practice through Placement
- Exploring boundaries: self, place and identity
- Learning in the Outdoor Environment
- Qualitative and Quantitative Research Methods
- Dissertation

Plus two option units taken from the postgraduate portfolio in a variety of disciplines

Elective Units

- Interdisciplinary Studies
- Business and Management
- Exercise and Sport Science
- Environmental and Geographical Science

With its contemporary style, the Masters in Outdoor Education seeks to broaden your horizons. The assessment is based on work-based experience, written assignments and presentations. A research proposal is the expected preparation for a dissertation.

Career prospects

We have designed this course for those who deliver and manage outdoor adventure experiences to give you a greater depth of understanding within your field. It is suited to those following a career in the outdoor sector, and teachers within schools, who are interested in the subject and wish to benefit from further academic study.

For more detailed information on course content visit mmu.ac.uk/10212



Research Profile: Georgina Stebbings

PhD student

Having completed my undergraduate degree at Manchester Metropolitan University, I was awarded a departmental bursary to enable me to continue with my studies to MSc level.

Before I had even completed my MSc degree, I was offered an associate lecturing position within my department and given the opportunity to undertake this alongside a part-time PhD upon completion of my MSc – a long-term ambition of mine.

I'm gaining invaluable experience in the field I would like to develop my career in, whilst developing academically through my PhD course. My undergraduate and postgraduate studies here have allowed me to realise my academic ambitions and I've had opportunities to develop additional skills outside the curriculum.

Throughout my time here I have been encouraged to develop my applied skills to make me a more employable individual, whether that be accreditation in my field of work, opportunities to work with Olympic and Paralympics athletes, or the chance to present my own research to like-minded peers.



Research at MMU Cheshire

All staff and postgraduate research students at MMU Cheshire are members of one of the University's eight research institutes.

Interdisciplinary focus

Research at MMU Cheshire is distinctive for its multi-disciplinary and interdisciplinary focus across a range of academic subjects. Cheshire Research currently comprises nine active centres that engage in multi- and interdisciplinary research across a range of subject areas:

- Centre for Accounting Research and Sustainability.
- Centre for Arts, Creativity and Enterprise.
- Centre for Business and Health.
- Centre for Genomic Research into Exercise, Performance and Health.
- Centre for Sports Performance Science.
- Centre for Lifespan and Wellbeing.
- Centre for Movement Rehabilitation.
- Centre for Research in Coaching.
- Centre for Social Justice and Community Health.

Research at the MMU Cheshire faculty has an international reputation with excellent performances in the last Research Assessment Exercise. Our work in these areas was assessed as internationally recognised or excellent and some as world-leading. This achievement acknowledges our strengths in fundamental, artistic and applied research, most with strong interdisciplinarity, and reflects the positive, supportive and dynamic research environment within Cheshire Research.

The close alignment of the Faculty's research portfolio with our teaching and learning provision ensures that both undergraduates and postgraduates benefit from the latest developments in the field. Postgraduate research students will, themselves, have opportunities to contribute to seminars and develop their own academic skills and practices.

Our research makes a significant impact on local, national and international society. Staff have received research awards for their innovative work and public engagement with the community. Many staff also hold professional qualifications that allow for exciting opportunities in applied research or practice-based research.

Please feel free to contact any of our staff to discuss your research ideas or to make enquiries about research opportunities. We welcome submission of project proposals leading to MA/MSc, MPhil and PhD degrees relevant to our Centres' ongoing projects. Please visit the Institute for Performance Research website (www.mmu.ac.uk/ipr) for further details of the institute's work and current funding and research opportunities.



Essential information

Entry requirements

This gives you an overview of the minimum entry requirements for our postgraduate programmes of study. In individual areas of study, however, you may be required to achieve grades higher than the minimum requirements.

It is therefore important to read the individual course entry for the course you wish to apply for which gives details of the typical entry requirements for that course. In particular, courses which lead to an award from a professional body may have specific entry requirements that are set by the professional body.

Satisfying the typical entry requirements may not, however, guarantee the offer of a place. Applications are considered on their own merits and in competition with others, with account being taken of examination results already achieved, predicted grades in forthcoming examinations, research project proposals, personal statements and academic references. In many cases an interview, audition or presentation of a portfolio is also an essential part of the selection process. In some cases, work experience or success in other fields can be accepted as equivalent to formal qualifications.

Taught Masters Programmes (MA, MSc)

You should have an honours degree or a postgraduate diploma or a professional qualification recognised as being equivalent to an honours degree. Other qualifications or work experience may be acceptable if they demonstrate appropriate knowledge and skills at honours degree standard.

Master of Research (MRes), Masters degree (MA, MSc) by Research and MPhil

You should have a first or second class honours degree (usually a 2:1) or an equivalent qualification. Applicants will be considered on their merits. Ability and background knowledge in relation to the proposed research, together with professional experience, publications, written reports or other appropriate evidence of accomplishment will be taken into consideration.

Opportunities exist to transfer from Masters by Research to MPhil, and all students registered for MPhil have the opportunity to transfer to PhD after completion of about 9 to 15 months of full-time study (or 15 to 21 months part-time), providing progress on the work demonstrates that development to this level can be achieved.

PhD

To apply for a PhD direct, you should have a Masters degree (or equivalent from an overseas institution), in a discipline which is appropriate to the proposed research, and includes sufficient training in research methods and the execution of a research project. If you do not meet these criteria but have had appropriate research or professional experience at postgraduate level which has resulted in published work, written reports or other appropriate evidence of accomplishment, this will be taken into consideration.

PhD (by Published Work)

The University offers two routes for PhD by Published Work. These routes provide an alternative for candidates who have acquired substantial experience in a working research environment, as a result of which a number of publications have been produced. Only published work that is available and accessible in the public domain will be eligible for consideration. Further information on these two routes is available in the Code of Practice and Regulations for Postgraduate Research Programmes of the University at: mmu.ac.uk/red

PhD (by Practice)

The University offers PhD by Practice, which is designed for candidates who are practising in a working research environment with the objective of producing outputs in a professional and/or studio context in the arts or design field. Further information on these two routes are available in the Code of Practice and Regulations for Postgraduate Research Programmes of the University at: www.red.mmu.ac.uk

International students

If you need to check your eligibility, visit our website www.mmu.ac.uk/international and check your specific country page for more detailed entry requirements and which international qualifications we accept. We also consider work experience and other factors so do include everything you think relevant in your application.

If you are not a national of a majority English-speaking country, you will need to provide evidence of your English proficiency. The level of English we require will depend on the qualification you wish to study and in addition to the entry requirements detailed on the course page, you will also need a minimum of IELTS 6.5, with no less than 5.5 in any section, or acceptable equivalent.

Funding and financial support

Many postgraduates are self-financed, however financial support may be available for both taught courses (normally for one year) and research (normally three to five) through a range of studentships and sponsorships.

Tuition fees for taught courses

The fees for taught courses, both full-time and part-time are provided on the course pages. Fees are correct at the time of going to press but may be subject to change and will be confirmed at the time of enrolment. The part-time fees stated are for the first year and, owing to the flexibility of part-time courses, denote the maximum fee for Year 1. Actual fees may vary depending on the units selected and the time taken to complete the course. For further information on fees please contact us on +44 (0) 161 247 2937.

Studentships

University Studentships are offered on an annual basis for students wishing to study for PhD, MPhil, MRes or Masters by Research (MA, MSc, LLM) degrees. They are normally held for up to three years and provide the home tuition fees and a

subsistence bursary of around £12,000 per annum. Studentships are attached to specific research projects. Industrial CASE awards, which are allocated to the industrial partner i.e. your employer can become available. Visit mmu.ac.uk/red

Sources of UK funding

Studentships

(England, Wales and Northern Ireland) Awards currently available for full-time postgraduate students usually cover university fees and a maintenance grant. Applications can be made through the department offering the course or the research place. The application deadline for Research Council awards is usually late April.

Arts and Humanities Research Council (AHRC) Professional and Vocational Awards support students who wish to pursue full-time postgraduate diploma and Masters programmes in certain practice-based professional and vocational areas of study in the Arts and Humanities.

Visit ahrc.ac.uk/apply/postgraduate.asp

Economic and Social Research Council (ESRC)

The ESRC funds two types of awards: a one year research training Master's degree (MRes) linked to a three year PhD; and a three year PhD programme. You may only apply to outlets which have been recognised by the ESRC and MMU has been successful in receiving recognition in the areas of business and management, and education. Visit www.esrc.ac.uk

Trusts, Grants and other sources of funding

- Industrial organisations/your employer
- Professional and Career Development Loans.
Visit www.lifelonglearning.co.uk for more information
- Charitable Trusts
- Research Grants
- Research Degrees

How to apply for a postgraduate taught course

Applications for full-time and part-time taught courses should be made on the Manchester Metropolitan University standard application available to download from mmu.ac.uk/applicationform

After completing the application form, please e-mail to direct@mmu.ac.uk or send by post to:

Direct Admissions Team
Manchester Metropolitan University
Business School & Student Hub
All Saints Campus
Lower Chatham Street
Manchester
M15 6BH

The University will inform you of the outcome of your application. Some offers may be conditional upon you satisfying the specified entry requirements.

How to apply for a postgraduate research degree

You can apply for admission to a postgraduate research degree either by responding to a specific advertisement for a studentship in the local or national press or by applying speculatively to the University.

To apply for a Professional doctorate, PhD, MPhil, MRes or Masters by Research you will need to complete the Application Form to Study for a Postgraduate Research Degree mmu.ac.uk/study/postgraduate/apply. You should also contact the research degrees coordinator for your chosen subject area to arrange a preliminary discussion about your proposed research topic.

If your application is successful you will be required to have an interview. When the University is satisfied that your proposed project is generally sound, your references have been received and that the appropriate supervision and resources are available, you will be sent a letter offering you a place. Enrolment for a research degree normally takes place at the start of each academic term, i.e. September, January and April, although some programmes may only have one enrolment period per academic session.

Following enrolment, in order to register for the degree you will be required to produce a research proposal of 1,000 words, with the help of your proposed supervisory team, and submit it to your Faculty Research Degrees Committee for approval within three months (full-time) or six months (part-time) of enrolment.

Disclaimer

The provision of educational services by The Manchester Metropolitan University is subject to terms and conditions of contract. Whilst the University has made every effort to ensure that the information contained in this course guide is accurate and up-to-date, we cannot give any warranty that this is the case, nor guarantee that places will be available for any particular courses. The University shall not be responsible for any loss or damage howsoever arising from your use of this publication (except as required by law). All information on courses within this guide relates to entry during the academic year to which the guide relates and will not be applicable to entry in any other year. The availability of courses offered may be subject to a minimum level of interest being shown by applicants in any given year. The University will use its reasonable endeavours to deliver educational services which it considers appropriate (for example library, IT and learning support) in accordance with the descriptions set out in this guide and other promotional material. Use of this publication is subject to MMU's terms and conditions which can be found at mmu.ac.uk/academic/academic_policy and mmu.ac.uk/legal.

International students

The Greater Manchester area is home to more international students than any other UK region outside London and we welcome over 3,500 international students from 121 countries to the UK every year.

Supporting your study

Manchester Metropolitan University understands that international students sometimes need a little extra assistance. We have specialist teams to provide the right support from application through to graduation and beyond.

The University's dedicated student services team offers international students career advice, counselling, chaplaincy, and learning support. If you need help with any aspect of your English language, from writing a report to communicating with your supervisor or seminar group, year round English Language support is available through your faculty and/or through our British Council accredited English Language Centre. Support is available throughout the year in the form of classes and individual consultations.

MMU International

MMU International is the International Office at the university. Many of the MMU International staff speak several languages and, having spent time in different countries, are uniquely placed to understand your needs as an international student. The team regularly visits many countries to inform students about the opportunities for study at the University.

MMU International also provides international students with advice on a wide range of matters from social events and immigration to day-to-day living in the UK. There is a comprehensive 3 day welcome programme to help you settle into university life this includes pre-enrolment, guest speakers, support in opening bank accounts, plus trips and activities to help you meet other students from your country and from around the world. If you fly into Manchester International Airport, there will be a team to greet you and transport you to your accommodation.

Entry Requirements

You can find country specific information about many international qualifications on our international website. It's important that you have sufficient knowledge of English to follow your courses successfully.

As a guide for most postgraduate courses you will need to achieve IELTS 6.5 or above with no less than 5.5 in any component or acceptable equivalent. There are pre-sessional English courses during July and August to help you achieve the level of English language proficiency you need before you start your course.

Applying

Once you've decided which course to apply for, you will need to submit your application. Many international and EU students use a recruitment consultant or education adviser based in their home country to help them. The University works with a number of Education Advisers worldwide and you may find that we have one in your country. They will be able to tell you more about the University and how to present yourself in a way that will interest admissions tutors and some will offer you assistance with your visa and pre-departure briefings. To check if there is a University appointed education advisor in your country visit mmu.ac.uk/international

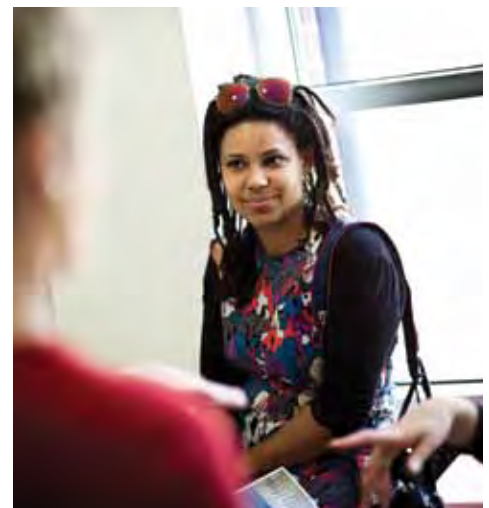
Funding and Financial Support

For details of scholarships for international students see mmu.ac.uk/international

Wherever you live in the world we'll welcome your application to study with us

Full information for international students is available at mmu.ac.uk/international

Telephone +44 (0) 161 247 1022
Email international@mmu.ac.uk







**Manchester Metropolitan University
All Saints
Manchester
M15 6BH**

+44 (0) 161 247 2000

mmu.ac.uk