

The University of
World-Class Professionals

Postgraduate Courses Fair

Wednesday 2nd September, 4-6pm
Business School and Student Hub,
Manchester Campus



Manchester
Metropolitan
University





Contents

6 Supporting your postgraduate studies

8 Art and Design

10 Business School

12 Nutrition, Events, Hospitality,
Tourism and Fashion at Hollings

14 Health, Psychology and Social Care

16 Humanities, Languages and Social Science

18 Faculty of Education

20 Manchester School of Law

22 Science and Engineering

24 Studying by Research

26 Getting to MMU



Welcome to the Postgraduate Courses Fair

Whether you want to maximise your opportunities in your current subject or choose a new direction, we have a large portfolio of full-time and part-time postgraduate options across many subject areas.

Many of our postgraduate programmes carry professional accreditation and provide academic expertise to help you get the most out of your postgraduate studies.

The Postgraduate Courses Fair is open from 4-6pm in the Business School and Student Hub on the Manchester campus. The event covers masters degrees, AMBA-accredited MBA, professional development programmes and studying by research.

Making the most of your time

Our Courses Fair is a flexible drop-in event and there are lots of options to make the most of the afternoon. You can arrive at any time between 4pm

and 6pm, although we suggest you arrive no later than 5.30pm to get the most out of the event.

We have Faculty stands, where you can speak to Academic staff to ask any questions you might have. There will be How to Apply, Student Finance and Careers advice to help with any information you may need to know about studying a postgraduate course. You can also have a tour of the Manchester campus.

The Faculty pages in this programme provide details of the activities for the course area you are interested in. There are subject sessions, including talks, discussions or question and answer sessions and opportunities to see departmental facilities.



Supporting your postgraduate studies

How to Apply

For advice on applying for postgraduate study, speak to staff from our Admissions Team who can talk you through the process for all our postgraduate courses.

Student Finance

Staff from our Finance Team will be on hand to answer your questions about fees, funding and financing your studies.

Careers

Staff will be available to answer your questions and provide advice and guidance at the Careers stand.

Our English Language Centre is here to help

Improving your English with us can often be the first step towards success in your Masters programme and in your career. You can rely on the quality of our Pre-Masters English courses. We are accredited by the British

Council, which is your guarantee that every aspect of your English course is professional.

Find out how we can help you to make the best possible progress in your postgraduate studies by visiting the team at the English Language Centre stand.

Campus Tours

Walking tours of the Manchester campus with our current students will be leaving on request, offering you the chance to see some of our facilities, such as the Student Hubs, library, sports facilities and some of our teaching buildings. Meet at the Campus Tour stand to go on the tour.

Considering a career change?

Many of our degree routes are open to applications from graduates of any discipline:

Business School

- Accountancy, Finance and Economics
- Digital and Business Technology
- Human Resource Management
- International Business Management
- Logistics and Supply Chain Management
- Management and Leadership
- Marketing, Advertising and Public Relations
- MBA
- Project Management

Hollings

- Events Management
- Food and Nutrition
- Hospitality
- Tourism

Health

- MSc Counselling
- MA Health and Social Care
- MRes Health and Social Care
- MSc Physiotherapy Pre-Reg

- MSc Psychology
- MSc Psychology and Criminology
- MSc Psychology Conversion
- MA Social Work
- MSc Pre-Reg Speech and Language Therapy

Humanities

- MA Applied Linguistics
- MSc Applied Quantitative Methods
- MA Creative Writing
- MA European Philosophy
- MA European Philosophy (Aesthetics)
- MA History
- MSc Information Management
- MA International Relations and Global Communications
- MA Library and Information Management
- MA Multimedia Journalism
- Master of Public Administration
- MA Public History and Heritage
- MA Sociology and Global Change
- Teaching English to Speakers of Other Languages

Education

- MSc Educational Leadership Management
- MA Education Studies
- MA Inclusive Education and Special Educational Needs
- MA Language Education
- PGCE Primary Education – Awards include: 3-7 / 5-11 age ranges
- PGCE Secondary Education (relevant honours degree required)
- Early Years Initial Teacher Training - The Graduate Employment Pathway
- MA Youth and Community Work

Manchester Law School

- Graduate Diploma in Law

Science and Engineering

- MSc Computing
- MSc Information Systems



Subject	Time	Location	Activity
Art, Design, Media, Architecture and Research Degrees	4.15–5.00pm 5.15–6.00pm	Meet at the Art & Design stand in the Courses Fair ten minutes before the chosen start time.	Find out more about your chosen course through a roundtable talk with a key member of teaching staff.

Art and Design

Manchester School of Art

Manchester School of Art's portfolio of postgraduate courses, both taught and research, offer a challenging and fulfilling range of creative opportunities in the fields of art, design, media and architecture.

Built on the traditions and strengths of the School, yet focusing on the future needs of creative industries and your chosen career path, our courses offer students flexible ways to study.

The postgraduate studios are at the heart of the School of Art which enables easy access to extensive workshops and gallery space, and provides a vibrant and cross-disciplinary learning environment.

As a postgraduate student you will be joining a community of full and part-time students who study alongside academics who are all research active and experts in their own field. Our

unique range of subject awards will allow you to develop a deep level of practice within your chosen discipline. It will also give you the opportunity to work on cross-disciplinary thematically based optional units. These units will explore current issues and debates, such as digital futures, health and wellbeing, contested territories, and museum and the city – the city as a museum. Many of our professional link projects connect to partners across the city and internationally in order to develop your network beyond the school.

During the event you can find out more about these opportunities and take a tour of the School of Art's facilities.

Tours of the School of Art

Tours of the School of Art will depart from the Art & Design Stand in the Courses Fair, leaving at 4.30pm, 5.00pm and 5.30pm.



Business School

As a major centre for postgraduate management and business education, our comprehensive portfolio of work related masters and professional programmes attracts achievers from across the world.

We offer courses in:

- AMBA-accredited part-time Executive MBA
- Accounting, Finance and Economics (including ACCA and CIMA)
- Business and Management research degrees
- Business Technology and Analytics
- Digital Communications
- Human Resource Management
- International Business Management
- Logistics and Supply Chain Management
- Management and Leadership
- Marketing, Advertising and Public Relations
- Project Management

All postgraduate business students have exclusive access to dedicated facilities on the top floor of our iconic, £75m Business School. These include study suites, common room and IT facilities for postgraduate, MBA and PhD students.

If your qualifications are relevant to the MSc you would like to study, you may be eligible for 'advanced standing'. This route gives you academic credit for your professional or postgraduate qualifications so you have fewer units (modules) to study to achieve an MSc. For more information, see:

www.business.mmu.ac.uk/pgtop-up

Subject	Time	Location	Activity
New to business? Building on your non-business first degree.	4–4.30pm	Business School Seminar Room 3.21 (third floor)	Talk and Q&A
Building on your business-related first degree with a postgrad qualification.	5–5.30pm	Business School Seminar Room 3.21 (third floor)	Talk and Q&A

Nutrition, Events, Hospitality, Tourism and Fashion at Hollings

Subject	Time	Location	Activity
Apparel MA Fashion Innovation	4–4.30pm	Business School Seminar Room 3.20 (third floor)	Presentation and Q&A
MA International Fashion Business: Buying and Merchandising Management MA International Fashion Business: Marketing Management	4.15–4.45pm	Business School Seminar Room 5.05 (fifth floor)	Presentation and Q&A
MA International Fashion Journalism	5–5.30pm	Business School Seminar Room 3.20 (third floor)	Presentation and Q&A
Events and Festival Management MA International Events Management MA International Convention and Exhibition Management MA International Cultural Arts and Festival Management MSc Crowd Safety and Risk Analysis	4–4.45pm	Business School Seminar Room 1.24 (first floor)	Presentation and Q&A
Food, Nutrition and Health MSc Food Innovation MSc Food Safety MSc Occupational Health Safety and Environment MSc Nutrition and Health	4.15–5pm	Business School Seminar Room 3.22 (third floor)	Presentation and Q&A
Hospitality and Tourism MA International Hospitality Management MA International Tourism Management MA International Tourism and Hospitality Management	4.45–5.30pm	Business School Seminar Room 5.05 (fifth floor)	Presentation and Quiz
Responsible Tourism, Events, Food, Hospitality and Fashion	For enquiries about these courses, please visit the subject stand.		
Tours to the Hollings Faculty, where these courses are based, depart from the subject stand at 5.30pm (30 min tour).			

Fashion and Apparel

Courses in the Department of Apparel encompass fashion in its broadest sense. Our courses give you a creative and technical appreciation of the fashion industry, as well as an understanding of the business, by closely replicating the working environment. We have a reputation for producing graduates with an enviable mix of industry-relevant knowledge underpinned by sound academic theory.

Nutrition and Occupational Health

At Hollings Faculty we have over 25 years of experience in teaching in this subject area. The faculty is also home to the Manchester Food Research Centre (MFRC) which gives our students lots of opportunities for real life case study experience.

Events, Food, Tourism and Hospitality Management

These industries are some of the largest in the world and touch all of our lives at some point. All our taught courses feature extensive experiential work-based learning opportunities, during which you will spend a year working in industry gaining valuable skills and experience and making contacts. The teaching staff at the Hollings faculty have significant industry experience which will bring direct benefits to you.

Attend one of our subject sessions to find out more about our courses.

Subject	Time	Location	Activity
MSc Psychology	4–4.30pm & 5–5.30pm	Business School Lecture Theatre 27 (ground floor)	Talk
MA Health & Social Care	4–4.30pm	Business School Seminar Room 3.09 (third floor)	Talk
MA Social Work	4.30–5pm & 5.30–6pm	Business School Lecture Theatre 27 (ground floor)	Talk
MSc Forensic Psychology	4.30–5pm	Business School Seminar Room 3.09 (third floor)	Roundtable Discussion
MSc Pre-Reg Speech and Language Therapy	4.30–5pm	Business School Seminar Room 3.09 (third floor)	Roundtable Discussion
MSc Counselling	4.30–5pm	Business School Seminar Room 3.09 (third floor)	Roundtable Discussion
MSc Physiotherapy pre-registration	5–5.30pm	Business School Seminar Room 1.23 (first floor)	Talk
Research Degrees in the Faculty	5–5.30pm	Business School Seminar Room 3.08 (third floor)	Roundtable Discussion
MSc Professional Practice Development	4.30–5pm	Business School Seminar Room 3.09 (third floor)	Roundtable Discussion

Tours to the Brooks Building, where these courses are based, will depart from the stand at 4.15pm and 5.15pm (45 min tour).

Health, Psychology and Social Care

Whether you are aiming to become a health and social care practitioner, already established, seeking to move into a more senior role or aspiring to a career in research our programmes have been designed to help you meet your professional ambitions.

A key feature of our courses is the integration of theory and practice, the added value of learning from extended experience in practice settings. As a result we are able to provide specialist skills, knowledge and values required for professional registration, continuing professional development, securing employment or further study in related areas.

Why not come along to our stand or one of our subject talks to find out what we offer.





Subject	Time	Location	Activity
MA Teaching English to Speakers of Other Languages	4–4.30pm	Business School Table 1, South Atrium (ground floor)	Roundtable Discussion
MA Creative Writing	4–4.30pm	Business School Seminar Room 1.23 (first floor)	Talk and Q&A
MA Library and Information Management MSc Information Management	4–4.30pm	Law School Seminar Room G.07 (ground floor)	Talk and Q&A
MA Sociology and Global Change	4.15–4.45pm	Law School Seminar Room G.06 (ground floor)	Talk and Q&A
MA Applied Linguistics	4.30–5pm	Business School Table 2, South Atrium (ground floor)	Roundtable Discussion
MA History MA Public History and Heritage MA Local and Regional History	4.30–5pm	Law School Seminar Room G.07 (ground floor)	Roundtable discussion
MSc Applied Quantitative Methods	4.45–5.15pm	Law School Seminar Room G.06 (ground floor)	Talk and Q&A
Master of Public Administration	4.45–5.15pm	Business School Table 4, South Atrium (ground floor)	Roundtable Discussion
MA International Relations and Global Communications	5–5.30pm	Business School Seminar Room 3.16 (third floor)	Talk and Q&A
MA English Studies	4.45–5.15pm	Business School Table 1, South Atrium (ground floor)	Roundtable Discussion
MA Criminology	5–5.30pm	Business School Table 3, South Atrium (ground floor)	Roundtable Discussion
MA Multimedia Journalism	5–5.30pm	Law School Seminar Room G.07 (ground floor)	Talk and Q&A
MA European Philosophy, MA European Philosophy (Aesthetics)	5.15–5.45pm	Business School Table 2, South Atrium (ground floor)	Roundtable Discussion

Humanities, Languages and Social Science

Providing a forum for some of the most vibrant ideas of our time...

Home to a thriving community of like-minded creative thinkers, the Faculty delivers versatile postgraduate programmes that see its students go on to succeed in diverse, international career pathways.

This globally-networked Faculty attracts students with inquiring minds, powerful communicators who can think critically.

Throughout the afternoon, there will be a series of presentations and Q&A sessions taking place, why not come along to find out more?



Faculty of Education

We are one of the UK's leading, internationally recognised educational centres, ranked first in the North West region by the Complete University Guide 2014/15. Working in partnership with over 2,000 schools, colleges and related settings, we train over 6,000 teachers and educational professionals each year at Manchester and Cheshire.

In addition to our PGCE Primary Education (available at Manchester or Cheshire), we offer over 20 PGCE Secondary specialisms including; Computing with ICT, Design & Technology, Mathematics, Modern Foreign Languages, Physics with Maths and Science.

We also have an extensive continuing professional development programme to Masters level, including: Educational Leadership Management, Education Studies, Inclusive Education and Special Educational Needs; Language Education and Youth and Community Work.

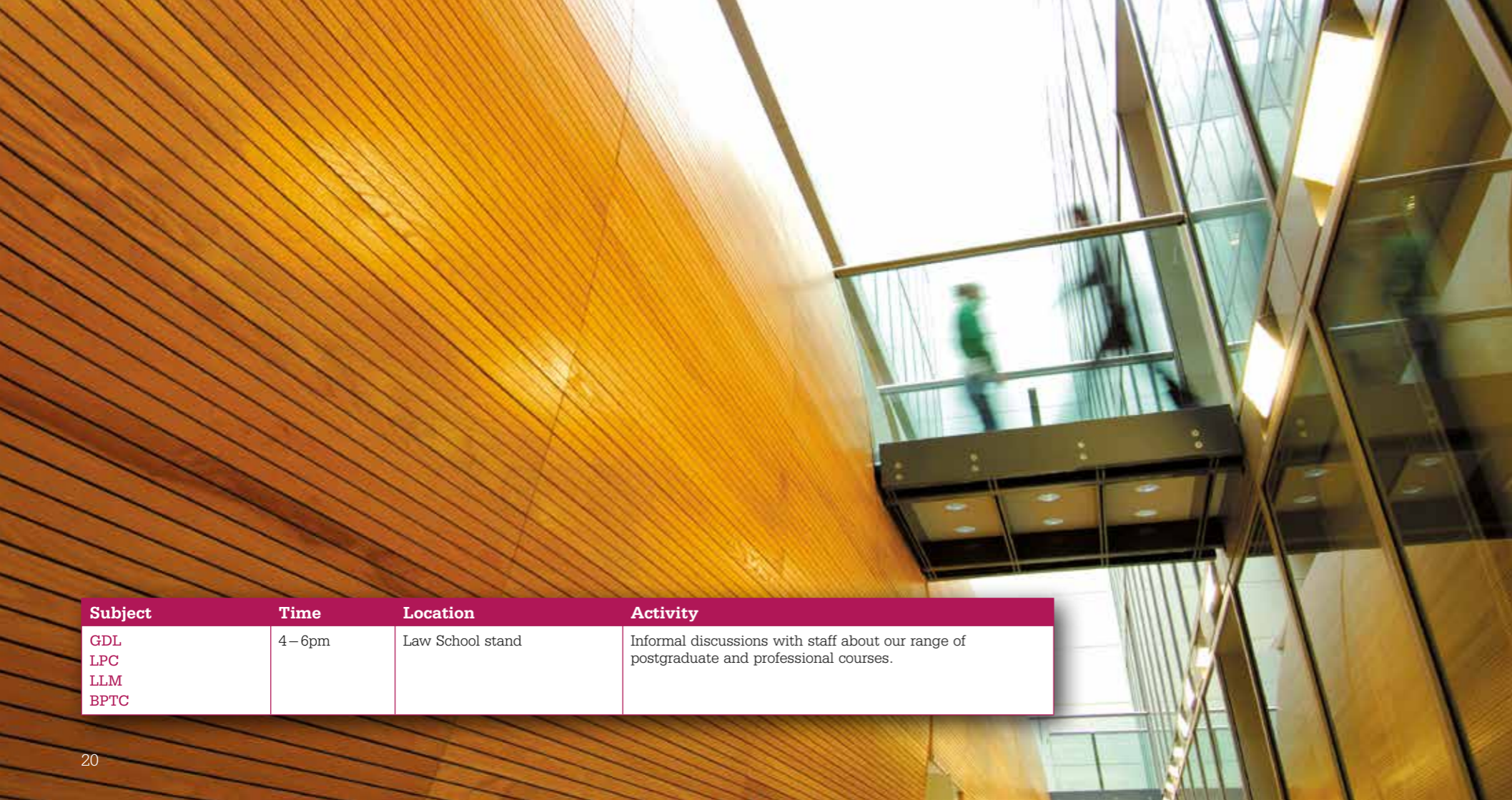
Our renowned Education and Social Research Institute offers an innovative Education Doctorate (EdD) as well as accepting PhD and MPhil applications.

To find out more about our postgraduate opportunities, please attend a talk or visit our stand.

Short tours will be available of some of the specialist teaching facilities at our recently opened Brooks Building.

Subject	Time	Location	Activity
PGCE Primary Education (3-7 and 5-11 age ranges)	4.15 – 5pm	Business School Lecture Theatre 26 (ground floor)	Talk/Q&A
PGCE Secondary Education	5.15 – 6pm	Business School Lecture Theatre 26 (ground floor)	Talk/Q&A
MA Inclusive Education and Special Educational Needs	4 – 4.45pm	Business School Seminar Room 3.08 (third floor)	Talk/Q&A
Education Professional Development	5 – 5.45pm	Business School Seminar Room 3.14 (third floor)	Talk/Q&A

Tours to the Brooks Building, where these courses are based, will depart from the stand at 4.15pm and 5.15pm (45 min tour).



Subject	Time	Location	Activity
GDL LPC LLM BPTC	4–6pm	Law School stand	Informal discussions with staff about our range of postgraduate and professional courses.

Manchester Law School

Manchester Law School is one of the largest law schools in the UK, attracting students from across the world.

The school provides a full portfolio of legal education from undergraduate through to professional and master's courses. Students benefit from top class legal training on our highly regarded postgraduate programmes and outstanding links with the legal community.

Manchester Law School is housed in a state-of-the-art building, adjacent to the outstanding Faculty Student Hub, which provides excellent additional resources; students enjoy a superb working environment with the convenience of Manchester's thriving legal firms on the doorstep.

Combining quality teaching and value for money, we offer a range of courses, on a full-time and part-time basis:

Graduate Diploma in Law (GDL)

For those students who have a non-law undergraduate degree but wish to convert to a career in law.

Legal Practice Course (LPC)

Professional training course for solicitors.

Bar Professional Training Course (BPTC)

Professional training course for barristers.

Masters of Laws (LL.M)

A flexible programme, providing the opportunity to enhance your legal knowledge and career prospects. There are two options, a fully taught traditional LL.M programme and a LL.M in Legal Practice ("top-up" LL.M) for those who have completed the LPC or BPTC.

Take this opportunity to find out more about the courses. Come to our stand or drop-in for an informal discussion, tour of the Law School and to meet our teaching staff.





Science and Engineering

The Faculty of Science & Engineering is one of the largest in the University with over 5,000 students.

Our graduates gain a combination of practical and theoretical skills that enable them to find employment in areas as diverse as computing, engineering, healthcare, environmental protection, transport, manufacturing, education and the leisure industry.

Visit our stand to meet staff and pick up further information about our courses or come along to our subject sessions, which give you the opportunity to see our specialist facilities and laboratories.

Over £50m has been invested in the past ten years in state-of-the-art laboratories and workshops equipped with the latest technology.

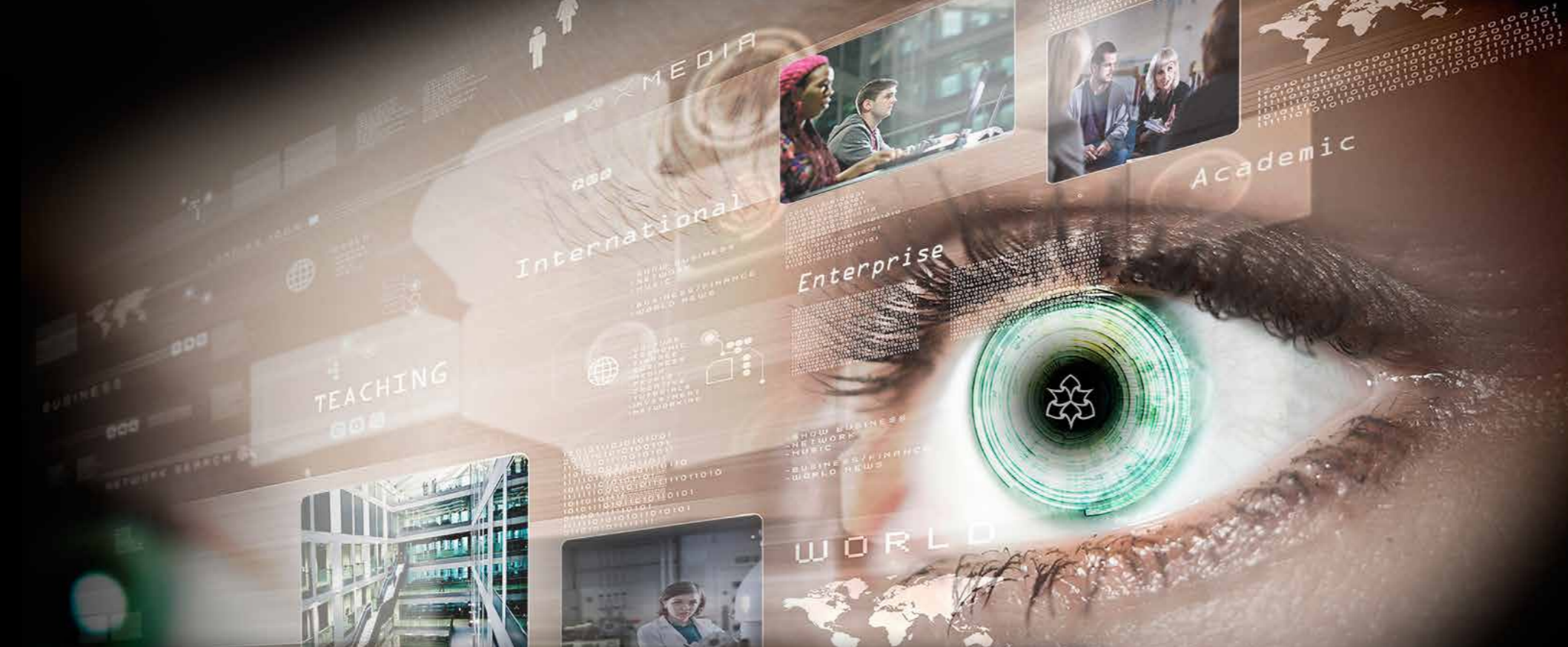
We also recently invested £500,000 in upgrading our chemistry and analytical science laboratories.

A very broad range of research opportunities is also provided by the Faculty. Research activities ensure that the teaching remains vibrant and informed by the latest advances in science and engineering. All Schools provide supervision for full-time or part-time study.



Subject	Time	Location	Activity
Engineering	4–6pm 4.30–5pm	Business School Table 5, South Atrium (ground floor)	Drop-in Q&A Tour of workshops and facilities
Computing	4–6pm 4.30–5pm	Business School Table 6, South Atrium (ground floor)	Drop-in Q&A Tour of computing labs and facilities
Biology & Conservation	4–6pm 5–5.30pm	Business School Table 7, South Atrium (ground floor)	Drop-in Q&A Tour of laboratories and facilities
Environment & Geography	4–6pm 5–5.30pm	Business School Table 8, South Atrium (ground floor)	Drop-in Q&A Tour of laboratories and facilities
Biomedical & Healthcare Science	4–6pm 5–5.30pm	Business School Table 9, South Atrium (ground floor)	Drop-in Q&A Tour of laboratories and facilities

 mmu.ac.uk/sci-eng.mmu.ac.uk



Subject	Time	Location	Activity
Research Degrees	5–5.30pm	Business School Seminar Room 1.24 (first floor)	Talk and Q&A session

Studying by Research

The University has a strong research profile, with most of our research areas world leading and rated internationally excellent.

We offer a range of research programmes including PhD, MPhil, MA or MSc by Research and Professional Doctorates.

A research degree will enable you to determine your own field of study within our eight different research institutes, covering a diverse range of subjects and interests, including:

- Art and Design
- Business and Management
- Chemistry
- Computer Science
- Education
- Engineering
- English
- Environmental Science
- Fashion
- Food and Nutrition
- Healthcare Sciences
- History
- Information Management
- Music and Performing Art
- Nursing
- Performance Research
- Philosophy
- Physiotherapy
- Politics
- Psychology
- Social Care
- Social Change and Wellbeing
- Social Work
- Sociology
- Speech and Language Therapy
- Tourism, Hospitality and Events Management

Visit the stand and talk to our dedicated staff and find out more about our research degrees and studentship opportunities.

 mmu.ac.uk/research

Getting to MMU

Manchester campus by public transport

Manchester Oxford Road Train Station

You can walk to the Manchester campus in 5 minutes. Turn right out of Oxford Road Station and walk underneath the railway bridge. The Manchester campus is to your right.

Manchester Piccadilly Station

Follow the signs for Fairfield Street/taxi ranks and take the 147 bus to Oxford Road/All Saints. The bus runs every 10-15 minutes. You can also walk, which takes 10-15 minutes. Please follow the pink path on the map.

Manchester Victoria Train Station

Follow the signs for the free metro shuttle bus service 2 (green). Get off at Chester Street and walk up to Oxford Road and turn right. The metro shuttle service runs every 10 minutes.

Piccadilly Gardens Bus Station
Take any of the following buses from Piccadilly Gardens and get off at Oxford Road/All Saints: 15, 16, 41, 42, 42A, 43, 44, 46, 47, 48, 111, 142, 143, 250 and 263. You can also walk, which takes 10-20 minutes.

Metrolink Stop

M Deansgate/Castlefield

You can walk, which takes 10 minutes. Walk down Whitworth Street West and turn right at Oxford Road train station. The Manchester campus is on your right.

M Market Street/Piccadilly Gardens

Follow the instructions above to take the bus to Oxford Road.

Manchester campus by car

There are no car parking facilities on campus and traffic wardens are very active in the area. The closest public car parks to the Manchester campus are:

- P1 NCP Manchester Aquatics Centre**
Booth Street East, Manchester, M13 9SS
Tariff: £2.40 - £8.60
- P2 NCP Manchester Chester Street**
Chester Street, Manchester, M1 5GE
Tariff: £2 - £15
- P3 NCP Manchester Hulme Street**
Hulme Street, Manchester, M15 6AW
Tariff: £3 - £6 (max stay 4 hours)
- P4 NCP Manchester Palace Theatre**
Whitworth Street, Manchester, M1 6NE
Tariff: £5.50 - £16.30
- P5 NCP Manchester Oxford Street**
Oxford Street, M1 5EJ
Tariff: £3-£18
- P6 O-Park First Street**
Anne Horniman Street M15 4FN
Tariff- £2.00 - £14.00

Overnight Accommodation

If you are travelling far, you could consider overnight accommodation in Manchester.

Please go to: www.visitmanchester.com or call **0871 222 8223** for further information.

For more information on travel go to: www.mmu.ac.uk/travel



If you require any further
information please contact us:

 **openday@mmu.ac.uk**

 **0161 247 6969**

 **mmu.ac.uk/postgrad**