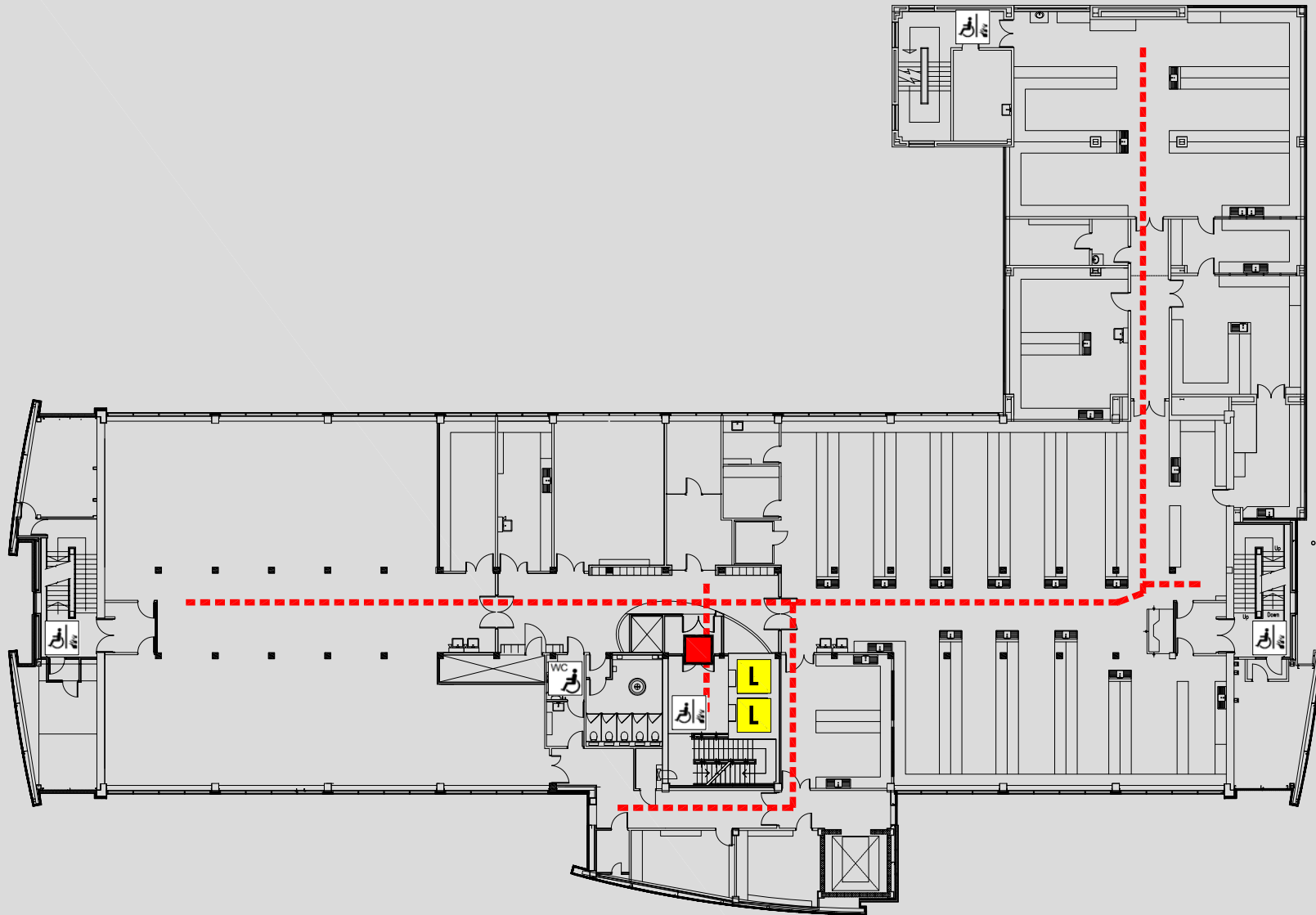


ACCESS @ MMU

JOHN DALTON TOWER : SECOND FLOOR PLAN



John Dalton Tower
 Chester Street
 Manchester
 M1 5GD

Reception
 Security

0161 247 1358
 0161 247 1334

KEY	
	Accessible route
	Automatic door
	Door on hold open devices
	Push button power assisted door
	Controlled access door
	Accessible lift
	Accessible reception counter
	Hearing loop available
	Fully Accessible toilet
	Accessible toilet
	Accessible ramp
	Fire refuge space
	Emergency exit only
	Evacuation chair

Website <http://www2.mmu.ac.uk>

Main switchboard

0161 247 2000