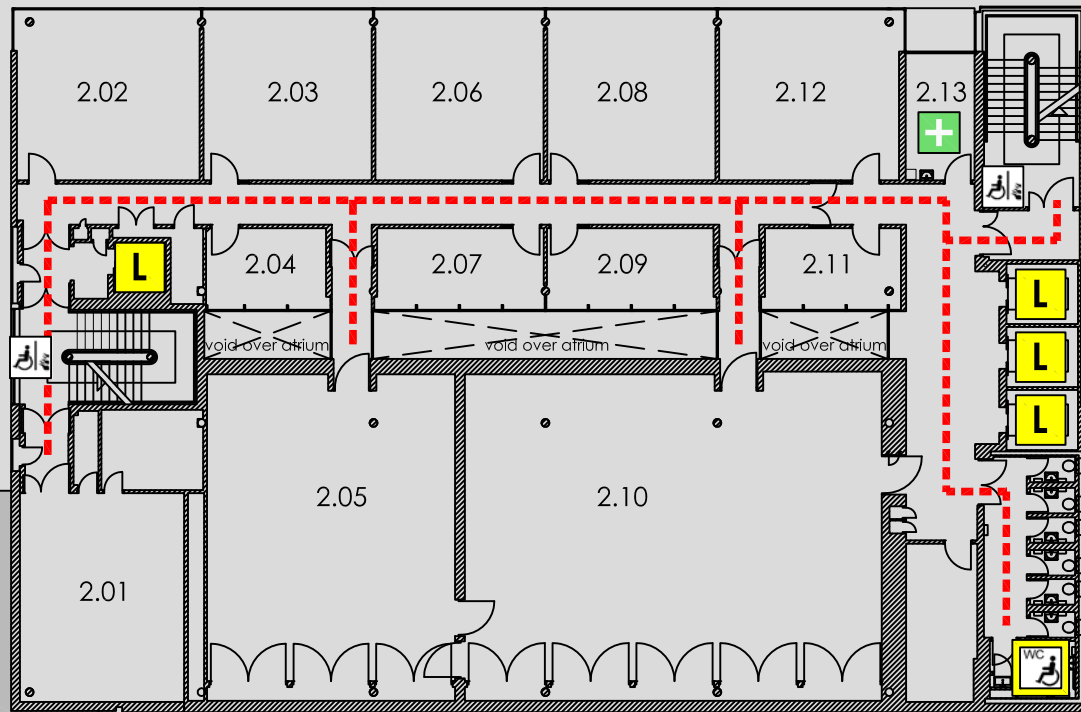


# ACCESS @ MMU

SANDRA BURSLEM : SECOND FLOOR PLAN



Business School Building

Sir Kenneth Green Library



Sandra Burslem Building  
Lower Ormond Street  
Manchester  
M15 6HB

Reception  
Security

0161 247 1362  
0161 247 1334

## KEY

- Accessible route
- Automatic door
- Door on hold open devices
- Push button power assisted door
- Accessible lift to all floors
- Accessible platform lift
- Accessible reception counter
- Hearing loop available
- Fully Accessible toilet
- Accessible toilet
- Accessible ramp
- Fire refuge space
- Emergency exit only
- Evacuation chair
- First Aid Room

Website <http://www2.mmu.ac.uk>

Main switchboard

0161 247 2000