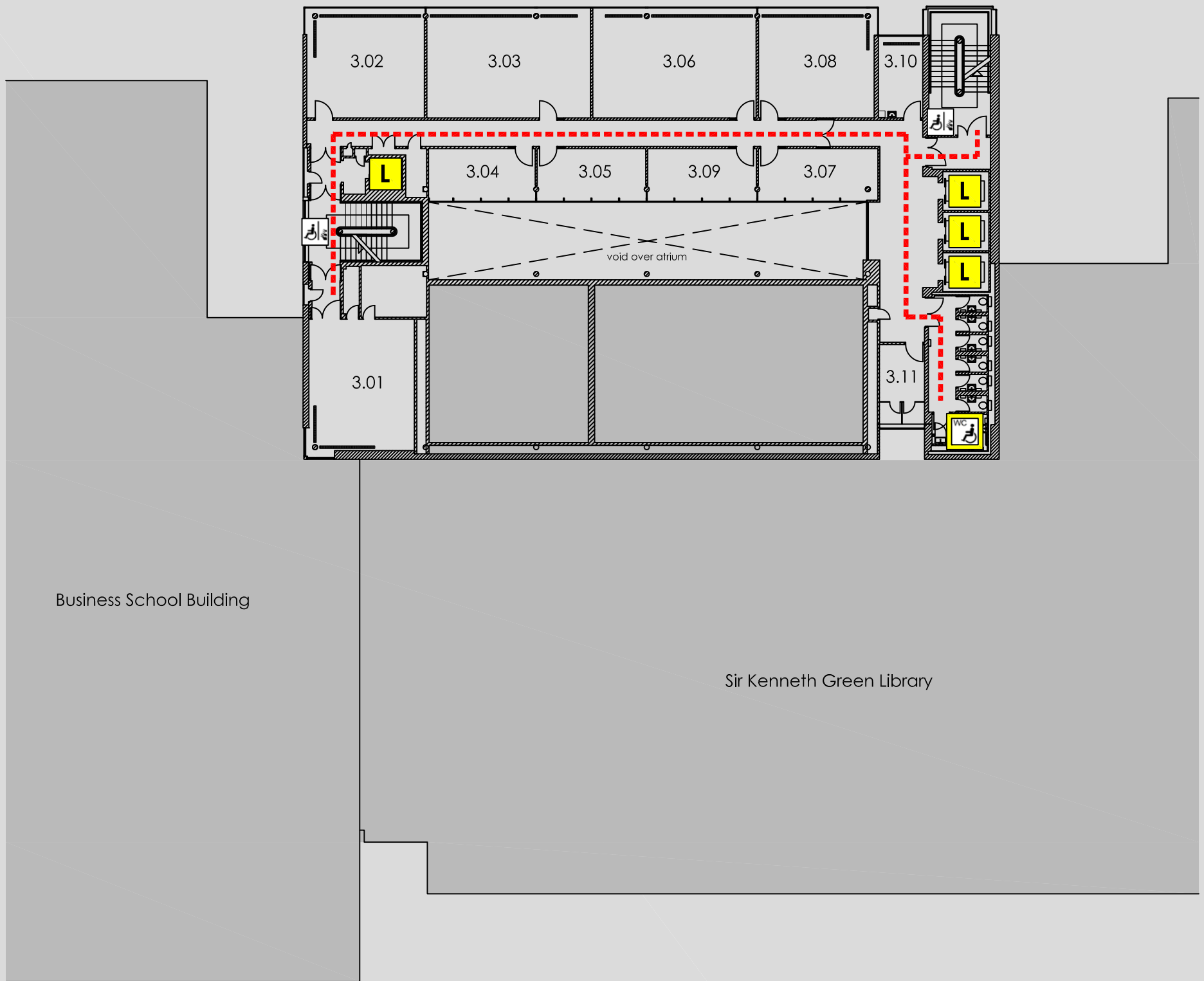


ACCESS @ MMU

SANDRA BURSLEM : THIRD FLOOR PLAN



Sandra Burslem Building
Lower Ormond Street
Manchester
M15 6HB

Reception 0161 247 1362
Security 0161 247 1334

KEY	
	Accessible route
	Automatic door
	Door on hold open devices
	Push button power assisted door
	Accessible lift to all floors
	Accessible platform lift
	Accessible reception counter
	Hearing loop available
	Fully Accessible toilet
	Accessible toilet
	Accessible ramp
	Fire refuge space
	Emergency exit only
	Evacuation chair
	First Aid Room

Website <http://www2.mmu.ac.uk>

Main switchboard

0161 247 2000